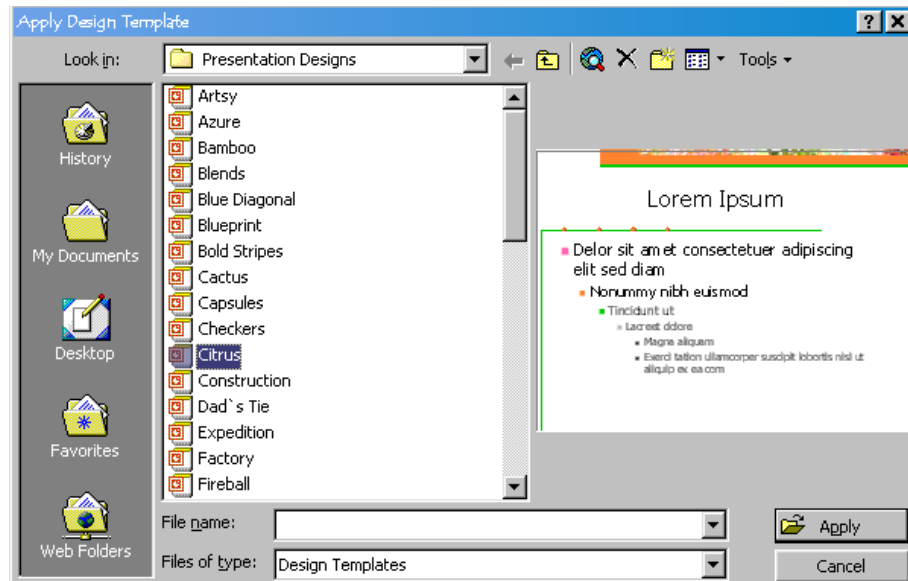
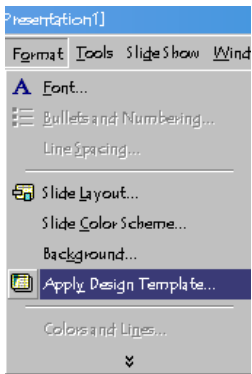


Electronic Portfolio Tip Sheet (IBM) Changing Slide Theme and Background

To Change the slide theme simple click **Format** from the menu bar and select **Apply Design Template** Then choose from a variety of pre-made slide themes.



To change the background of a slide click **Format** from the menu bar and select **background...** Use the drop menu to select a color and/or pattern. Notice you can choose to apply this to all or one of your slides.

