

**For and about FSU people**  
**A publication of Marketing and Communications**  
Volume 55, Number 10, October 28, 2024

Copy deadline: noon Wednesday, Candis Johnson at [cvjohnson@frostburg.edu](mailto:cvjohnson@frostburg.edu)

## New Irish Music Trio to Appear at Mountain City Traditional Arts



From left, Irish musicians David Doocey, Cillian Vallely and Alan Murray

FSU's Mountain City Traditional Arts will host a new Irish Music Trio with superstar members Cillian Vallely, David Doocey and Alan Murray on **Sunday, Nov. 10**, at 4 p.m. at 25 E. Main St. in Frostburg. The live entertainment is open to the public through general admission with a suggested donation of \$15.

The trio features a unique collaboration between three of the best-known names in traditional Irish music – Vallely on uilleann pipes, Doocey on fiddle and vocalist Murray on guitar. The trio released their debut album “The Yew and the Orchard” in November 2023 to great critical acclaim, including a four-star review from The Irish Times.

All three musicians have stellar reputations in the traditional Irish music scene. Vallely is a key member of the supergroup Lunasa. Doocey was the 2005 winner of the World Fleadh fiddle championship and has toured all over the world. And Murray is a current member of Irish group Solas.

Armagh native Vallely has played for many years with award-winning, traditional Irish supergroup Lunasa. Influenced by the rhythmic, flowing style of Paddy Keenan and Johnny Doran, Vallely's mastery of chanter, drones and regulators has earned him a reputation as one of the top players in the tradition. He has performed with acts as diverse as Bruce Springsteen, Riverdance, Natalie Merchant, Mary Chapin-Carpenter and Tim O'Brien and at venues like the Hollywood Bowl, Carnegie Hall, Paris Bercy and the Royal Albert Hall in London. He has also appeared on more than 70 albums, including seven with Lunasa, his acclaimed solo debut “The Raven's Rock,” “Callan Bridge” with his brother Niall and “On Common Ground” with Kevin Crawford.

Doocey, from County Mayo, is at the forefront of a younger generation of Irish musicians. He has won several awards for his outstanding fiddle playing, including the All-Ireland Fleadh, the first-ever World Fleadh fiddle championship in 2005 and the much-coveted Feile Oriel trophy. He has toured throughout Asia, Europe, America, Australia and New Zealand, performing on stage with Grada, Michael McGoldrick, Tim O'Brien, Martin Hayes, Dougie MacLean, Dermot Byrne and Sharon Shannon, as well as a regular guest with the Dave Munnely Band and Sean and Dolores Keane. Late 2013 saw the release of Doocey's critically acclaimed first solo album, “Changing Time.”

Guitarist, bouzouki player and singer Murray hails from Glasgow, Scotland, where he grew up playing the whistle and later guitar. Eventually moving to the United States, he has established himself as an in-demand performer and teacher on the Irish music scene. He has recorded and performed around the world with many of the finest traditional musicians and acts today, including Lunasa, Eileen Ivers, Scotland's Battlefield Band and Four Winds.

MCTA is a program of FSU and a founding member of Maryland's Folklife Network. It receives support from the Maryland Traditions Program of the State Arts Council.

For info, call 301-687-8040.

## Help for Students

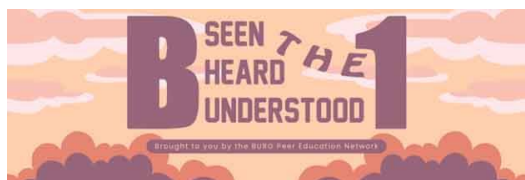
### PAWS Pantry

The PAWS Pantry at FSU provides food and basic necessities to FSU students at no cost. The pantry is open and available to all students. Students will complete a brief survey and paperwork to register as a pantry member during their first visit. During regular hours, students may come to the pantry and shop from the selection of non-perishable foods and hygiene products (when available).

The pantry is located at Braddock House at 20 Braddock Road. Walk-up hours are 9:30 a.m. to noon and 6 to 8 p.m. on **Mondays** and 12:30 to 4:30 p.m. on **Wednesdays, Thursdays and Fridays**. Other weekdays are by appointment. To schedule an appointment, email [pawspantry@frostburg.edu](mailto:pawspantry@frostburg.edu). For info, visit <https://www.frostburg.edu/student-engagement/student-life/service/paws-pantry/PAWS-Pantry.php>.

Space is limited and is on a first-come, first-served basis, so register soon!

### Combating Loneliness Across Campus



Loneliness is becoming a serious issue on college campuses across the country. Over the past two decades, people ages 15 to 24 have seen a sharp decline in the amount of time they spend hanging out with friends in person – dropping by 70 percent, from about 150 minutes a day in 2003 to just 40 minutes in 2020. At the same time, social networks are shrinking, and it's becoming harder to form close friendships.

As college students, it's essential to prioritize building connections and friendships. Spend more time in common areas, talk with your classmates and get involved in extracurricular activities. One great way to meet new people and make a difference is by joining BURG Peer Education Network. The group meets **Wednesdays** at 5 p.m. in Pullen 107. BURG is all about promoting healthy choices and offering fun alternatives to drinking and drugs, while working to create positive change on campus. Stop by and join a group of peers making a real impact!

### Tutoring information for Fall 2024

#### Services for Fall 2024

Services include one-on-one, appointment-based tutoring, group tutoring, online tutoring and walk-in tutoring for select subjects and skills.

#### General Info

**Extending through Tuesday, Dec. 10**, appointments take place **Mondays through Fridays** from 8:30 a.m. to 4:30 p.m. in Pullen 151. (Appointments are available past 4:30 p.m. based on tutor availability).

#### Courses Tutored

One-to-one courses include Academic Skills (study skills, time management, textbook strategies, note-taking), BIOL 109/149/161/321, CHEM 100/150/201/202, COSC 100/101/102/240/241, MATH 104/119/120/236/237/238 and Writing.

Group (walk-in) tutoring includes **PHYS 215/261, Tuesdays**, Isaac, 2:30 to 3:30 p.m., GSS 236, Khayahsi, 3 to 5 p.m., GSS 236, **Wednesdays**, Saylor, 2 to 3 p.m., GSS 236, Jeremaiah, 3 to 4 p.m., GSS 236, **Thursdays**, Khayahsi, 9 a.m. to noon, GSS 358, Saylor, 10 to 11 a.m., GSS 358, Te'a, 10 to 11 a.m., GSS 358, Erick, 10 to 11 a.m., GSS 358, Khayahsi, 1 to 3 p.m., GSS 236, **Fridays**, Jack, 9 to 10 a.m., GSS 236; **BIOL 321, Mondays**, 3:20 to 5:20 p.m., Compton 326, **Tuesdays**, 3:20 to 5:20 p.m., EHSC 302; and **CHEM Department Group Tutoring** – 201/202/311/321, **Thursdays**, Cierra Wilson, 2 to 4 p.m., Compton 358.

#### Online Tutoring (NetTutor)

The FSU Tutoring Center uses NetTutor, which is a 24/7 platform staffed by professional tutors. There is no additional cost for this service.

#### Walk-ins With Mr. Smith (time management, study skills, note taking, reading strategies, writing and more)

This includes help with writing, philosophy, history, art, time management, study skills, textbook strategies, note taking, building a rapport with your professor, presentation tips, strategizing for classes, navigating college life and general questions about FSU. Walk-ins will take place **Mondays, Wednesdays and Fridays** from 1 to 3 p.m. in Pullen 151 and are first-come, first-served.

#### Tutoring Center Tutors

Tutors are as follows: Carolyn DeSena – BIOL 149/321 and CHEM 201/202, Dakota Donaldson – CHEM 100/150/201/202 and MATH 119/120/236, Reagan Mangum – BIOL 109/149/161, Te'a Thompson – MATH 104/119/120/236/237/238 and PHYS 261, Isaac Zais – COSC 100/101/102/240/241, PHYS GSS and 1 to 1 PHYSICS, Jayme Moyer – Writing, Nick Hanes – COSC 100/101/102/240/241 and MATH 104/119/120/236/237/238 and Kaitlyn Green – BIOL 321 Group.

---

## Additional Help Resources

At FSU, the Tutor Resources course in Canvas, which is a repository of handouts, links, etc., can help with many facets of your academic endeavors. No enrollment is necessary. The course is accessible via your Canvas courses page.

Online learning videos are available from the Khan Academy, a free online learning platform with instructional videos that cover math, science, computing, economics and a host of other subjects and topics (<https://www.khanacademy.org>) and Thomas Frank on YouTube, which is dedicated to everything about college (<https://www.youtube.com/thomasfrank>).

Online writing is available from Purdue OWL, a robust reference for all things related to academic writing (<https://owl.purdue.edu>), Landmark Citation Machine, resources for MLA, APA and Chicago Style manuals (<https://www.citationmachine.net>) and Written Kitten, a drafting resource where you write 100 words and get a motivational photo of a kitten.

Online study aids include Quizlet, digital flashcards, learning tools and learning and study games (<https://quizlet.com/gb>), and the Pomodoro Technique, productivity and focus (<https://www.pomodoratechnique.com>).

For online research, check out the reference librarians at the FSU Ort Library. They can help you with research using online databases the University offers. Google Scholar, which provides broad searches of the internet for academic content (articles, etc.), is another resource.

Online books are available from Google Book, where you can search the world's most comprehensive index of full-text books (<https://books.google.com>), and Project Gutenberg, a large repository of copyright-free versions of classic books, texts, novels, cultural writings, etc. (<https://www.gutenberg.org>).

For info, email Mark Smith at [msmith@frostburg.edu](mailto:msmith@frostburg.edu) or call 301-687-4066.

## SafeRide



The SafeRide Program, an initiative of the Student Government Association, offers safe transportation to current FSU students. A student-operated program, it is free to all students. SafeRide runs almost anywhere in the city of Frostburg, including 7-Eleven, Weis, McDonalds, Burger King, Urgent Care, etc. It also provides various employment opportunities to the students of FSU as well as offers FSU-recognized organizations the opportunity to earn volunteer hours.

SafeRide is just a tap away! Download the TransLoc app today. Use the app to request your ride and to receive notifications when your driver arrives. Sign in using your FSU credentials and request a ride during SafeRide hours. Hours of operation are 10 p.m. to 2 a.m. on **Fridays and Saturdays**. You can also request a ride by calling the SafeRide Office at 301-687-7433.

---

## Dance

### CES at FSU Presents American Ballet Theatre Studio Company



CES at FSU will present American Ballet Theatre Studio Company on **Wednesday, Nov. 6**, at 7:30 p.m. in the Drama Theatre of FSU's Woodward D. Pealer Performing Arts Center. This engagement is sponsored by Dr. Julianne K. Ferris.

ABT Studio Company, the junior company of American Ballet Theatre, is made up of rising stars of the ballet world between the ages of 17 and 21. The company prepares these outstanding young dancers, who hail from all over the globe, to enter American Ballet Theatre and other leading ballet companies worldwide. Nearly 80 percent of current American Ballet Theatre dancers are ABT Studio Company alumni, including eight soloists

and 14 principal dancers – among them Misty Copeland, Isabella Boylston and Calvin Royal III.

ABT Studio Company dancers perform masterworks of the classical and neoclassical canons alongside contemporary works. The group commissions a wide variety of choreographers to create new, custom ballets on the dancers each season, with a special focus on female choreographers.

The highly mobile ABT Studio Company serves as an ambassador for American Ballet Theatre by touring to venues large and small. In recent years, the company has performed in such international cities as London, Athens, Manila, Hong Kong and St. Petersburg and at a wide variety of U.S. performing arts centers, college campuses, festivals and galas.

Performance tickets are \$45 for adults, \$40.50 for FSU employees and members of the military, \$35 for youth and free for FSU students.

For info, visit [ces.frostburg.edu](http://ces.frostburg.edu) or call 301-687-3137.

Community members can also register to observe the dancers in their daily class at noon on **Nov. 6**. Attendance is limited; registration is required.

CES is supported in part by the Maryland State Arts Council ([msac.org](http://msac.org)) and receives financial support from the Allegany Arts Council and the City of Frostburg.

## Theatre

### FSU's Department of Theatre and Dance Presents 'Puffs,' a Fast-Paced Parody Featuring Unlikely Heroes



FSU's Department of Theatre and Dance will feature the comedy "Puffs," or "Seven Increasingly Eventful Years at a Certain School of Magic and Magic," by Matthew Cox on **Friday, Nov. 22, and Saturday, Nov. 23, and Thursday, Dec. 5, through Saturday, Dec. 7**, at 7:30 p.m., with a matinee on **Nov. 23** at 2 p.m. Directed by **Darrell Rushton**, performances will take in the F. Perry Smith Studio Theatre of FSU's Woodward D. Pealer Performing Arts Center.

According to Nerdist, Puffs "never goes more than a minute without a laugh."

For seven years a certain boy wizard went to a certain Wizard School and conquered evil. This, however, is not his story. This is the story of the Puffs ... who just happened to be there, too. This is a tale for anyone who has never been destined to save the world, and as the magazine Time Out New York pointed out, "Puffs illustrates the heights to which underdogs can soar."

Puffs is recommended for audiences 14 and older. Tickets to the comedy can be purchased online by visiting <https://frostburgtix.universitytickets.com>.

For info, call the Theatre and Dance Box Office at 301-687-7462 **Mondays through Fridays** from 9 a.m. to 12:30 p.m. and 1 to 4 p.m.

## Music

Unless otherwise noted, events will take place in Pealer Recital Hall and are free and open to the public. Unless admission is charged, concerts will be livestreamed; the link will be posted at [www.frostburg.edu/concerts](http://www.frostburg.edu/concerts). For info, contact FSU's Department of Music at 301-687-4109.

### FSU's Saxophone Orchestra Celebrates Adolphe Sax Birthday With Concert

FSU's Department of Music will present a birthday celebration recital in honor of Adolphe Sax, the Belgian musician and inventor of the saxophone, on **Sunday, Nov. 3**, at 3 p.m.

Directed by **Dr. Brent Weber**, Saxophone Orchestra personnel are **Gwen Fazenbaker** and Weber on soprano saxophone; **Christopher Wrotten** on alto saxophone; **Tammy Burns, Robert Godfrey** and **Max Partlow** on tenor saxophone; and **Vincent Hangarter** and **Gabe Hicks** on baritone saxophone. They will be assisted by community members Scott Heavner, Eileen Martin and Heather Williams on alto saxophone and Rich Frush on tenor saxophone.

The group will perform pop and jazz classics and a special dedication to **Janet Stevens '83/M'88** (7/23/1961-7/8/2024). The program will include "Golliwog's Cakewalk" by Claude Debussy, arranged by Thomas Pechot; "String of Pearls" by Eddie De Lange and Jerry Gray, arranged by Austin Ralphson; "Harlem Nocturne" by Earl Hagen, arranged by Ralph Raymond Hays; "Rhapsody in Blue" by George Gershwin, arranged by Austin Ralphson; "Birdland" by Josef Zawinul, arranged by Ralphson; "Amazing Grace" by John Newton; "Smoke on the Water" by Ritchie Blackmore, Ian Gillan, Roger Glover and Jon Lord, arranged by Kate Agioritis; "Carol of the Bells" by Mykola Leontovych, arranged by Jonathan Eno; and "Don't Stop Believin'" by Steve Perry, Neal Schon and Jonathan Cain, arranged by Agioritis.

The Golliwog character was made into a very popular children's doll, owned by Debussy's daughter, which was the inspiration for the piece. Clearly influenced by African American ragtime and jazz, "Golliwog's Cakewalk" is the sixth and final piece in his piano solo suite "Children's Corner" (1908).

"A String of Pearls" is a 1941 song recorded by Glenn Miller and His Orchestra that became a No. 1 hit. The song is a big band and jazz standard.

"Harlem Nocturne" is a jazz standard written in 1939 for the Ray Noble Orchestra.

"Rhapsody in Blue" is a 1924 musical composition for solo piano and jazz band, which combines elements of classical music with jazz-influenced effects.

"Birdland" is a jazz/pop song written by Zawinul of the band Weather Report as a tribute to the Birdland nightclub in New York City, which appeared on the band's 1977 album "Heavy Weather."

"Amazing Grace" is a Christian hymn written in 1772 by English Anglican clergyman and poet John Newton. The lyrics are based on Newton's experience of receiving God's grace and mercy, despite the terrible things he had done. Prior to his life as an ordained minister, he participated in the Atlantic slave trade and captained a slave ship.

"Smoke on the Water" is a song by English rock band Deep Purple, released on their 1972 studio album "Machine Head." The song's lyrics are based on true events, chronicling the 1971 fire at Montreux Casino in Montreux, Switzerland.

"Carol of the Bells" is a popular Christmas carol, which is based on the Ukrainian New Year's song "Shchedryk." The music for the carol comes from the song written by the Ukrainian composer Leontovych in 1914.

Known for its iconic opening piano riff, “Don’t Stop Believin’” is a song by American rock band Journey. It was released in October 1981 as the second single from the group’s seventh studio album, “Escape.”

## Department of Music Presents Winter Choral Concert, ‘Fin de siècle’

FSU’s Department of Music will present its Winter Choral Concert, “Fin de siècle,” on **Saturday, Nov. 16**, at 7:30 p.m. Join the FSU Chamber Singers, University Chorale and Troubadours Tenor-Bass Choir, under the direction of **Dr. Scott Rieker** and accompanied by pianist **Dr. Joseph Yungen**, for an evening of exceptional choral music.

The end of a century almost invariably produces remarkable output in the arts, especially music. While “fin de siècle” denotes a specific epoch, this wide-ranging concert explores the repertoire around the ends of various centuries, from the 16th to the 20th. The evening will feature compositions by Wolfgang Amadeus Mozart, Lili Boulanger and Darius Milhaud, as well as the first song known to have been written down in the Western Hemisphere.

Tickets are \$10 for adults; \$5 for members of the military, seniors and FSU faculty and staff; and free for students and children. Tickets can be purchased at [tickets.frostburg.edu](https://tickets.frostburg.edu). Tickets will also be available for purchase at the door.

## Presentations

### Bobby Petrocelli Returns to FSU Nov. 19



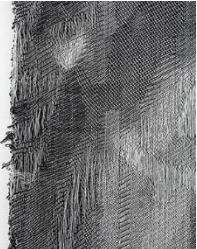
Motivational speaker Bobby Petrocelli will appear at FSU on **Tuesday, Nov. 19**, at 7 p.m. in the Lane Atkinson Room (232). Petrocelli is a nationally acclaimed speaker known for his inspiring story of overcoming hardship and turning adversity into a message of hope, resilience and personal empowerment.

His heartfelt and empowering message is one that will resonate with anyone looking for strength in tough times or simply wanting to be inspired to live more intentionally.

For info about Petrocelli and his mission, visit <https://10seconds.org>.

## Exhibitions

### Exhibition by Gabrielle Duggan: ‘pursues integrous deliverables’



FSU’s Department of Visual Arts is presenting its second exhibit of the fall semester, a solo exhibition by Gabrielle Duggan, “pursues integrous deliverables,” **through Tuesday, Nov. 26**, at the Stephanie Ann Roper Gallery in FSU’s Fine Arts Building. This exhibition is free and open to the public.

Duggan has had residencies at Fish Factory, Creative Center of Stöðvarfjörður, Iceland; Sculpture Space Inc. in Utica, N.Y.; Praxis Fiber Workshop in Ohio; Cooler Ranch, Landfalls and Governors Island Art Fair in New York; the Musk Ox Farm in Alaska; Ponyride, as a Knight Foundation Emerging Artist, in Michigan; and Rob Dunn Lab at North Carolina State University and North Carolina Museum of Natural Sciences.

Awards include the Juror’s Prize at Art on the Trails by Sarah Montross; the Integrated Coastal Programs Coastal Fellowship (Coastal Studies Institute), RCAA, East Carolina University; and project grants from the North Carolina Arts Council. An associate professor at East Carolina University, Duggan has also taught at the University of North Texas, Georgia State University and Penland School of Craft.

Duggan’s work simulates binary systems, drawing attention to inter-reliance between dichotomies by positioning grey areas in balanced tension. Textile strategies, technology and materials have been a reliable foundation for the artist’s work to reflect social, political and historical implications of power.

Duggan constructs installations in three-dimensional space by applying principles of tension and repetition to post-consumer and post-industrial materials. These works range from intimate to significant in scale through material choice and context. When performing with sound, image or as image, Duggan steps into these roles directly inhabiting spaces of lost and self-possessed agency.

For this show, the Roper Gallery is open **Mondays through Fridays** from 11 a.m. to 5 p.m.

For info on the artist, visit <https://www.gabrielleduggan.com/index.html>. For info on the exhibition, contact April Pauza at [ajpauza@frostburg.edu](mailto:ajpauza@frostburg.edu).

### New Ort Library Exhibits Spotlight Local Company History



Students pose with one of the new exhibits.

The Lewis. J. Ort Special Collections and Archives have collaborated with **Dr. Elly McConnell’s** History 433 Public History class to curate exhibits in the library this fall. Students were able to learn elements of exhibit curation such as visual layout, local and regional history education, and writing through this experiential learning project.

The Artmor Plastics Corp. exhibit is located on the fifth floor. Artmor, created by Art Morgan, was a plastics company that existed on the high point of the Cumberland Narrows. Morgan was a visionary who had big plans for the Narrows, including a museum, visitors center and gondola. Artmor was in business for nearly 40 years. The Artmor exhibit was curated by **Wesley Mason, Trent Harris, James Goodwin** and **Aiden Adams**. In their exhibit, students blended Morgan's wild ambitions with his long-running factory and considered future possibilities for the land Morgan purchased.

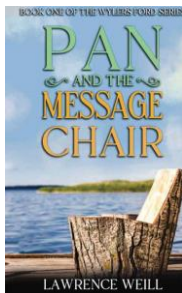
The local glassware exhibit is located on the second floor. Glassware from this exhibit is on loan from Allegany Museum. Allegany County alone once had approximately 28 glassware companies throughout its history. Many of them burnt down. Examples featured in the exhibit include Cumberland Glass Company, Sloan Glass and Utility Glass Works. Students selected beautiful representations of local stemware and glass pieces, researching each company. The Glass Companies exhibit was curated by **Lydia Nebiolo, Megan Knox, Sydney Smolenski** and **Haley Droll**.

The Western Maryland Central Labor Council (WMCLC) exhibit is located on the third floor. The Labor Council represents approximately 5,000 members of 39 local unions. It is an affiliate of the AFL-CIO. Students worked with the WMCLC collection to select representation of the materials from the collection. The exhibit highlights the United Rubber, Cork, Linoleum and Plastic Workers of America/United Rubber Workers, Local 26 (1943-1994). This union represented Kelly Springfield workers with artifacts that document the closure of the Kelly Springfield Tire Facility in 1987. Students also include documents from the Brotherhood of Railroad Trainmen and the local Macaroni workers. This exhibit was curated by **Mary Wolodkin, Oliver Simon, Caleb Wegman** and **Saphira Gray**.

These exhibits will be on display in the library for the remainder of the academic year.

## Points of Pride

### Weill to Sign Recent Titles at Main Street Books



**Dr. Lawrence Weill**, interim provost and vice president for Academic Affairs at FSU, is also an award-winning author and artist. He recently arranged a book signing to feature his more recent titles at Main Street Books in Frostburg on **Saturday, Nov. 9**, from 11 a.m. to 2 p.m.

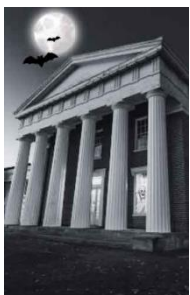
Residing in western Kentucky, he writes novels, short fiction, nonfiction articles and books, creative nonfiction and poetry. He has eight books in print (another currently at the publisher), including six novels. His latest two novels are "Return of the Goatman" and "Pan and the Message Chair," which won Literary Fiction of the Year at Imaginarium 2024. His work has appeared in a wide range of local, regional and national journals. He also is a

visual artist working in graphite, oils, metal and wood.

In addition to his life as a writer and visual artist, Lawrence works in academia, beginning as a professor of philosophy and ethics for some 25 years, then as an academic administrator.

When he is not in Maryland, Weill lives in the woods overlooking a beaver pond next to a wildlife preserve. He is also an avid outdoorsman and gardener.

### Duncan Will Present on 'Weird Western Maryland: Curses, Ghosts and Monsters'



**Andy Duncan**, a professor in the Department of English and Foreign Languages, will present on "Weird Western Maryland: Curses, Ghosts and Monsters" on **Tuesday, Oct. 29**, at 6 p.m. at the (reportedly haunted) Washington Street Library in Cumberland. "Don't worry," says the library announcement, "only his jokes are scary."

For info on the event, contact the library at 301-777-1200 or [washingtonstlibrary@alleganycountylibrary.info](mailto:washingtonstlibrary@alleganycountylibrary.info).

Duncan's ongoing Weird Western Maryland project can be visited at <https://www.frostburg.edu/personal-arduncan>.

### Armiento Featured in National Geographic Article

**Dr. Amy Branam Armiento**, a professor in the Department of English and Foreign Languages, was interviewed for a recent National Geographic article titled "Murder or Madness: What Really Killed Edgar Allan Poe?" written by Erin Blakemore. The piece appeared on the 175th anniversary of the iconic writer's death.

To read the article, visit <https://www.nationalgeographic.com/history/article/edgar-allan-poe-death-mystery?loggedin=true&rnd=1728666731232> (for subscribers only) or contact Armiento for a copy.

### Profs and Pints Invites Armiento Back for More Poe Lectures

Profs and Pints, an enterprise that brings college faculty members into bars, cafés, company offices and other off-campus venues to share their knowledge with young people, invited **Dr. Amy Branam Armiento**, professor of English, to reprise her talk titled "The Macabre Poe" at three venues: Guilford Hall Brewery in Baltimore, Penn Social in Washington and Crooked Run Fermentation in Sterling, Va. This year, her talk reached more than 200 patrons, and she was able to market her new edited collection "More Than Love: The Enduring Fascination With Edgar Allan Poe."

To read Armiento's interview with Kelley Land at Mercer University Press, visit <https://shorturl.at/15ev1>.

## Project Green Challenge – FSU Remains No. 3 Out of 535 Participating Schools!

Thirty-one Sustainability Studies students are participating in Project Green Challenge 24, an online campaign that educates, empowers and mobilizes students worldwide around climate action, public health, social justice and advocacy. As of Oct. 23, students in SUST/IDIS 155 (Intro to Sustainability Studies) placed FSU at No. 3 on the Leaderboard out of 535 participating schools! Since last week, FSU has gone up to 9,320 points and is now only 300 points behind the No. 2 school. FSU is the highest scoring participating University.

Visit <https://projectgreenchallenge.com> for info on these challenges and to watch the progress of FSU. Contact Tracy Edwards at [tedwards@frostburg.edu](mailto:tedwards@frostburg.edu) or in Gunter 210 for info on Sustainability Studies at FSU or if you would like to participate in PGC this year or in the future.

## Office of Sponsored Programs Successes/News

On Oct. 17, project director **Dr. Angela Luvara**, an assistant professor in the Department of Sociology, was awarded \$30,000 by the Foundation for Appalachian Kentucky – Sycamore Fund for the project, Carceral Appalachia Action Research Lab – Examining Policing in Appalachia.

For info, see the OSP's Successes/News webpage at <https://www.frostburg.edu/osp/Successes%20News.php>.

## Take Note

### USM Board of Regents Faculty Awards

The Board of Regents Faculty Awards are the highest honor presented by the Board of Regents to exemplary faculty members within the University System of Maryland. These awards publicly recognize distinguished performance in teaching, scholarship or research, creative activity, public service and mentoring on the part of faculty members. All details related to the call for nomination, guidelines and eligibility can be found at <https://www.usmd.edu/usm/academicaffairs/regents-faculty-awards>.

FSU can nominate up to five faculty members for USM Board of Regents Faculty Awards.

The internal deadline to submit materials to [provost@frostburg.edu](mailto:provost@frostburg.edu) is **Thursday, Nov. 7**, by close of business. (The deadline for FSU to submit nominations to USM is **Friday, Nov. 15**.)

For info, email [provost@frostburg.edu](mailto:provost@frostburg.edu).

### Info on Voter Registration and Mail-in Ballots

Important Maryland deadlines and dates:

**Present to Thursday, Oct. 31** – Early voting (For early voting locations go to <https://elections.maryland.gov/elections/2024/2024%20Early%20Voting%20Centers%20v1.pdf>.)

**Tuesday, Oct. 29** – Mail-in ballot request deadline

**Tuesday, Nov. 5** – Election Day (7 a.m. to 8 p.m.) and mail-in ballot deadline (postmarked by **Nov. 5** or deposited in a ballot drop box by 8 p.m.)

Maryland residents who miss the Oct. 15 registration deadline can register to vote on Election Day at their local polling location or when they go to vote early.

TurboVote (<https://frostburg.turbovote.org>) is available to all students to assist with registering to vote, requesting mail-in ballots, receiving election reminders and more for any state.

Maryland residents can also visit the Maryland Voter Registration website at [https://elections.maryland.gov/voter\\_registration/application.html](https://elections.maryland.gov/voter_registration/application.html) to register to vote or request a mail-in ballot online.

For info, contact the Office of Civic Engagement at [civicengagement@frostburg.edu](mailto:civicengagement@frostburg.edu).

### Need a Ride to the Polls?



On Election Day 2024 (**Tuesday, Nov. 5**), the Allegany County Transit System will adjust its schedule to accommodate those who want to go from campus to vote at Mountain Ridge High School.

This is a special transit route for one day only.

For info, contact Dr. Artie Travis at [altravis@frostburg.edu](mailto:altravis@frostburg.edu).

---

## Campus and Community Discussion Series

The campus and local community discussion series hosted by the STCO 350 Intercultural Communication class continues in the Adams/Wyche Multicultural Center at the Lincoln School on the following **Thursdays** at 11 a.m. All are welcome.

**Oct. 31**, dialogue about cultural celebrations and traditions (Feel free to dress up or bring artifacts that recognize your autumn and October holidays/traditions.)

**Nov. 7**, post-election dialogue about feelings and the future in partnership with Choose Civility: Allegany County

**Nov. 21**, dialogue on Western Maryland LGBTQ+ history in collaboration with Preservation Maryland's "Planting the Rainbow Flag" initiative, co-sponsored by FSU's Office of Diversity, Equity and Inclusion and the Department of History

**Dec. 5**, topic TBA

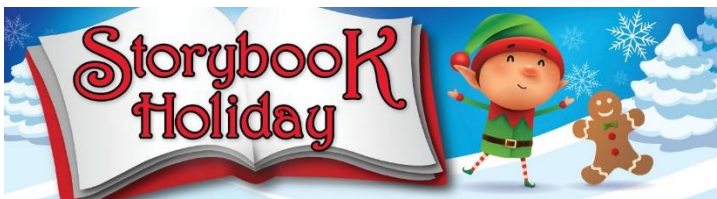
For info on these Communication Leadership Lab events, contact Dr. Elesha L. Ruminski, professor of strategic communication and chair of the Department of Communication.

## Majors Fair



Need help finding the right major? Do you feel like the major you are in might not be right for you? Want to talk to other students who are familiar with your major? Then be sure to attend the Majors Fair hosted by the Career and Professional Development Center on **Wednesday, Oct. 30**, from 11 a.m. to 2 p.m. in Lane Manicur Hall. Meet with students from FSU Honors and academic programs as they share info about their majors. Interactive demonstrations and prizes will be available.

## Annual Storybook Holiday, a Free Children's Event, to Be Held Dec. 7



The Children's Literature Centre, in conjunction with the city of Frostburg, will host the 21st Annual Storybook Holiday on **Saturday, Dec. 7**. Storybook Holiday is a free event for kids of all ages to experience Main Street in Frostburg turned into a winter-wonderland!

The day includes Elf Olympics, the Storybook Holiday Parade, Co-Co With the PoPo, Kids Elf Training Academy, Horse-Drawn Carriages, Letters to Santa, Elves Secret Workshop, an Author Presentation and more.

For info about Storybook Holiday, visit <https://www.frostburg.edu/clc/sbh> or contact the Children's Literature Centre at 301-687-3133 or [clc@frostburg.edu](mailto:clc@frostburg.edu).

## Outdoor Recreation Equipment Rentals



The Center for Advancement of Natural and Outdoor Experiences (CANOE) is a program of the Department of Recreation and Parks Management at FSU. CANOE is a dedicated center that serves as a catalyst for advancing outdoor and natural experiences for students, faculty, staff and the surrounding community.

The center facilitates access to outdoor equipment, resources, quality outdoor recreation activities, field experiences, internships and student employment in the outdoor industry.

CANOE offers outdoor recreation equipment rentals. Available equipment includes bikes, tents, kayaks, paddle boards, snowshoes and more!

For info, visit <https://www.frostburg.edu/fsu-canoe/index.php>.

## Appalachian Lab Seeks Nominations for Inspiration Award

Nominations are currently open for the 2025 Appalachian Laboratory Inspiration Award. The award recognizes those who engage in or provide support to science, technology, engineering or mathematics (STEM) initiatives in the following counties: Garrett, Allegany and Washington counties in Maryland; Bedford, Fulton and Somerset counties in Pennsylvania; and Mineral, Morgan, Preston and Hampshire counties in West Virginia.

In 2022, the Appalachian Laboratory of the University of Maryland Center for Environmental Science (UMCES) celebrated its 60th anniversary in Western Maryland. As a lasting way of marking that milestone, the lab launched the Appalachian Laboratory Inspiration Award to recognize those in the tri-state region who share the lab's commitment to future generations of STEM professionals in the community. Previous winners include Team 1629 Garrett Coalition (GaCo) in 2024 and Robotics and Engineering in Allegany County Together (REACT) in 2023.

Both individuals and organizations (private, public or non-governmental) are eligible. Nominees must be engaged in or supporting STEM programming in the lab's defined tri-state region as described above. Nominations will remain open until **Monday, Nov. 18**.



Visit [www.umces.edu/al/inspiration-award](http://www.umces.edu/al/inspiration-award) to submit a nomination, or contact Rhonda Schwinabart at 301-689-7102 or [rschwinabart@umces.edu](mailto:rschwinabart@umces.edu) for info.

## Volunteers

### Interested in Volunteering?

The Office of Student Life posts service projects open to FSU Students in Bobcat Connect under Volunteer Opportunities.

You can request to join the organization to receive automatic email updates whenever events are posted, or all events will be made public so anyone with Bobcat Connect access can sign up.

You can visit the page and request to join at <https://frostburg.campuslabs.com/engage/actioncenter/organization/voice>.

For info, contact Ashley Daniels at [amdaniels@frostburg.edu](mailto:amdaniels@frostburg.edu), 301-687-7615 or in Lane 231.

## Community

### Like Fresh Fruits and Veggies?



Save time in your weekly schedule to visit the Allegany County Farmers Market, which is held **Fridays** from 9:30 a.m. to 1 p.m. at City Place in Frostburg, just a short walk from campus. Shopping local supports local farmers and producers and helps the environment.

In-season produce, eggs, beef and flowers are available.

## Health and Safety Messages

### Halloween Safety Tips



**Avoid strangers:** Don't let strangers into your dorm or apartment. If you see something suspicious, report it to University Police.

**Travel in groups:** Try to travel in groups and let a trusted friend or family member know where you are if you're traveling alone.

**Stay in well-lit areas:** Avoid poorly lit areas and try to walk in high-traffic areas.

**Choose a safe costume:** Avoid bulky accessories that could obstruct your vision. You can use makeup or face paint instead.

**Add reflective tape:** Add reflective tape to your costume or the back of your shoes to make yourself more visible in the dark.

**Stay hydrated:** If you're going to drink, do so responsibly and never accept a beverage from someone you don't know.

**Know the exits:** If you're going to a party, familiarize yourself with the exits so you're prepared in case of an emergency.

---

## VALUES AND VISION: FROSTBURG STATE UNIVERSITY IN 2024

### CORE VALUES

Frostburg State University is a place where every student can experience a myriad of opportunities both in and out of the classroom, fostered by a sense of inclusion and close mentoring relationships with faculty and staff.

Frostburg State University is committed to developing cultural competence and cultivating understanding of and respect for a diversity of experiences and world views that encourage each person's ability to "take the perspective of the other."

Frostburg State University is committed to a system of shared governance that allows faculty, staff and students to learn about the issues the University confronts and that provides a structure for meaningful input into University decisions.

### OUR VISION FOR FROSTBURG STATE UNIVERSITY IN 2024

Frostburg State University is a regionally acclaimed and nationally recognized academic institution that provides distinctive programs to support state and regional workforce needs. Faculty, staff and students foster collaboration in a welcoming and inclusive campus culture.

Students value the opportunities open for them at FSU and form close mentoring relationships with faculty and staff, who are committed to their success and well-being. Students apply knowledge and skills learned in the classroom to internship, civic engagement, study abroad and research experiences to meet the challenges of a complex and changing global society.

The University is integrated into the fabric of the community as a valued and respected regional asset. We are committed to making changes that secure our future while celebrating the values that reflect our history.

---

## STRATEGIC GOALS

Goal 1: Strategic Enrollment Management – Develop a marketing, recruitment and retention plan that identifies realistic and sustainable goals for first-year, transfer, online, adult, graduate and international students, and the resources necessary to implement the FSU SEM Plan, which outlines strategies, action items and measurable outcomes across the next three fiscal years.

Goal 2: Campus Environment and External Messaging – Promotion of a campus culture that emphasizes student success, enhances the well-being of our students and employees, and fosters a sense of belonging.

To view FSU's Strategic Plan 2024-2026 online, visit [www.frostburg.edu/strategicplan](http://www.frostburg.edu/strategicplan).