

StateLines

www.frostburg.edu/news/statelines.htm

For and about FSU people

A publication of the FSU Office of Advancement

Volume 35, Number 18, February 7, 2005

Copy deadline: noon Wednesday, 228 Hitchins or emedcalf@frostburg.edu

Retired Professor Bauman to Direct Alumni Jazz Ensemble

The FSU Jazz Ensemble will return this year for a night of impressive jazz, under the direction of FSU professor emeritus Dr. Jon Bauman. The show will be held on Saturday, Feb. 12, at 8 p.m. in the Performing Arts Center on campus.

This Alumni Jazz Ensemble consists of musicians from Massachusetts to

California, including alumni Chris Alexander, Vanessa Candreva, Dave Coccia, Albert DeFusco, Richard Frush, Mike Gellar, Tom Harrison, Noel Kunkle, Peter Redyk, Kendra Rinard, Doug Robinson and Bill Schreiber.

Song selections will include such classics as "This Could Be the Start of Something Big," "My Tune," "Take the A

Train" and "Jersey Bounce." This big-band concert is guaranteed to feature many of your favorite tunes.

The concert is free and open to the public.

To order a CD of the performance, please contact Jack Aylor at x4161 or jaylor@frostburg.edu.

Music



Scratch Track

UPC Presents Acoustic Trio Scratch Track

Scratch Track, a new acoustic trio that blends funk, folk, hip-hop, rock and gospel, is performing at FSU on Saturday, Feb. 12, at 8 p.m. in the Lane University Center Loft. The event is sponsored by the University Programming Council.

Comprised of Will Gray, Jason Hamlin and DJ Lee, Scratch Track mixes rapid-fire lyrics, street poetry, languid harmonies, driving guitars and explosive percussive vocals, all contributing to the rich musical sound. Lately they have been performing from coast to coast with such acts as Living Colour, Jurassic 5, Will Hoge, Jars of Clay, Los Lonely Boys, Teitur, and the Dave Matthews Cover Band.

For information, call the Lane University Center Information Desk at x4411.

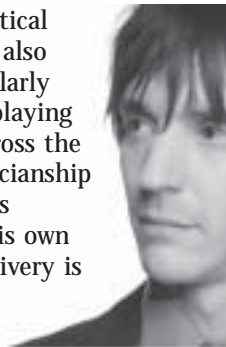
Live! at the Loft Series Presents Chopper

FSU Center Stage Live! at the Loft series presents acoustic rock and roll

singer/songwriter Chopper on Tuesday, Feb. 15, at 7 p.m. in the Lane University Center Loft.

Chopper honed his musical talents playing in a steady stream of bands. He joined Vertical Horizon in 1994. He also toured with the similarly styled Jackopierce, playing college campuses across the country. As his musicianship sharpened, so did his yearning to create his own sound. Chopper's delivery is mesmerizing, with onstage charm and rich vocal styles that remind one of a young Bob Dylan or Tom Waits.

This event is free and open to the public.



Chopper

Art



Visual Arts Presents 'Second Message'

FSU's Visual Arts Department presents the "Second Message" art exhibition through Sunday, Feb. 27, in the Stephanie Ann Roper Art Gallery in the Fine Arts Building on campus.

The exhibition, which showcases the works of area residents Ken Braitman, Mary McCunn, Kurt Bonello and Kate Keely, will feature different forms of artistic expression including paintings and sculptures.

Braitman's sculptures give new life or perspective to old discarded objects. Keely's paintings explore issues related to the human condition translated in a symbolic manner. McCunn's sculptures and jewelry are produced using mixed metals, creating an abstract metamor-

phosis on small insect-like elements in nature. Bonello's sculptures are influenced by or constructed from found objects or natural formations.

The Stephanie Ann Roper Art Gallery is open to the public 1 to 4 p.m., Monday through Wednesday.

Entertainment



UPC Presents Comedy with Smith, Caouette

Owen Smith and Steve Caouette will bring their comedy acts to FSU on

Friday, Feb. 11, at 8 p.m. in the Lane University Center's Alice R. Manicur Assembly Hall. The show is sponsored by the University Programming Council.

Smith's stand-up act has been seen on shows such as Comedy Central's "Premium Blend," "NBC's Friday Night," CBS's "Star Search" and the "Montreal Just for Laughs Comedy Festival." His show focuses on his personal life and humanity, proving that relevance can be hip.

Caouette's routine is a unique blend of impressions that are found within the stories he shares. Caouette is known for working with the "Late Show with David Letterman" in the '90s, performing at colleges across the country and recently



Owen Smith



Steve Caouette

Inside:

Theatre	2	Take Note	3-4	Jobs, Jobs, Jobs	4
Speakers	2	Points of Pride	4	International	5
Literature	2	Get Involved	4	Calendar	6

co-starring in the independent movie "Tough Hombre."

For information, call the Lane University Center Information Desk at x4411.

Theatre



Season Too! Presents 'Suicide in B-Flat'

University Theatre's Season Too! will present "Suicide in B-Flat" by Sam Shepard on Feb. 18 and 19 at 8 p.m. in the F. Perry Smith Studio Theatre of the Performing Arts Center.

Directed by Jonathan Moulds, the "mysterious overture" "Suicide in B-Flat" follows the mishaps of two clumsy detectives, Louis (Phil Hopf) and Pablo (Thom Cutler), who investigate the murder of famous jazz musician, Niles (Matt Ancarrow), only to get caught up in a confusing run-around. Did a murder take place? Or was it a suicide? Who, indeed, is the victim? Surely something or someone died! Musicians Niles, Lauren (Kirstyn Hendershott), and Paulette (Kim Edmonds) attempt to help the detectives unravel the crime in this darkly funny and absurd world of music and mystery.

All tickets are \$5. For reservations and information call the University Theatre box office at x7462, Monday through Friday from 9:30 a.m. to 4 p.m.

V-Day Activities and 'Vagina Monologues'

FSU will present Eve Ensler's Obie Award-winning play "The Vagina Monologues" on Friday and Saturday, Feb. 25 and 26, at 8 p.m. in the Performing Arts Center. FSU student Diana Moore directs the production. All proceeds will benefit the Family Crisis Resource Center in Cumberland and the Dove Center of Garrett County. The play is being performed as part of V-Day, a campaign to stop violence against women and girls around the world.

This is the fourth year FSU has marked V-Day. Through campaigns, local volunteers and college students, annual benefit performances of "The Vagina Monologues" are produced to raise awareness and funds for anti-violence groups within their communities. In 2004, FSU raised approximately \$4,500.

FSU Women's Studies Program, the Feminist Majority Leadership Alliance, Amnesty International, Philosophy Club, The Center for Volunteerism and National Service and the Residence Hall Association will sponsor this benefit production. Tickets are \$5 for students and \$10 for non-students and may be reserved by calling x7462.

Other V-Day events at FSU begin with the "Clothesline Project" on Wednesday, Feb. 9, and Thursday, Feb. 17, from 6 to 9 p.m. in the Performing Arts Center. On Tuesday, Feb. 15, at 6 p.m. Amnesty International will present "Iraqi Women, Under Siege" in the Lane University Center, room 202. On Sunday, Feb. 20,

from 4 to 6 p.m., "Healing Invisible Wounds" will be presented at the Osborne Newman Center. On Monday, Feb. 21, at 6 p.m. in Dunkle Hall room 213, Taness Cline from the Family Crisis Resource Center will speak about "Dating Violence." On Tuesday, Feb. 22, at 7 p.m., the "Philosophy Club Discussion" will take place in the Lane University Center rooms 205-206. On Wednesday, Feb. 23, at 6:30 p.m. "Take Back the Night," a march across campus will begin at the Echo Circle. On Monday, Feb. 28, at noon in Ort Library room 237, FSU Librarian Sean Henry will present "Provocateur and Radical Feminist: Elfriede Jelinek, 2004 Nobel Prize Winner in Literature."

For more information about V-Day, contact Patty Gray at (301) 689-5652 or VDayFrostburg@hotmail.com or visit www.vday.org.

UT to Present 'Metamorphoses'

University Theatre will present Mary Zimmerman's *Metamorphoses* on March 4, 5, 10, 11 and 12 at 8 p.m. and March 5 at 2 p.m.

One of the most unusual and highly acclaimed contemporary plays, "Metamorphoses" is an evocative, beautiful retelling of selected myths from the Roman poet Ovid. The stories of King Midas, Orpheus and Eurydice, Cupid and Psyche, and Phaeton, among others, are included. Set in and around a large, shimmering pool of symbolic water, the play probes enduring questions about life, love, death and the inevitability of transformation and change.

In 2002, *Metamorphoses* received a Tony nomination for Best Play, and adapter/director Mary Zimmerman won the Tony for Best Direction of a Play.

Tickets are \$5 for students and \$10 for the general public. For reservations and information, please call the University Theatre box office at x7462, Monday through Friday from 9 a.m. to 4 p.m.



Speakers

AAST Plans Summer Mini-Grant Colloquium

The African American Studies Program invites you to attend the first annual AAST Summer Mini-Grant Colloquium, Tuesday, Feb. 15, from 7:30 to 9 p.m. in the Leake Room. Join us as we celebrate the work and share the research findings of Suzi Mills, Music/Performing Arts, and Kate Keely, Visual Art. Suzi and Kate were the first two recipients of the AAST Summer Mini-Research Grant Program initiated this past year. The focus of Suzi's project, "Salsa Caliente," was "to better understand the collaborations that took place in the early decades of the 20th century between Cubans in the U.S., African Americans and other Latin American musicians that resulted in the contemporary Latin musical genre of Salsa."

Kate's research focus on African American and Afro-Hispanic artists yielded great insight into the happenings and movements in the contemporary world of art. After a brief presentation by each of the grant recipients, we will share part of the sights and sounds of their research efforts.

Refreshments will be served.

Weekly Forums in Hadra's Honor Continue

The free weekly forums named for the late James Hadra will continue each Monday at noon in Ort Library room 237. The talks are free and open to the public; each program will last 50 minutes. Attendees are encouraged to bring a bag lunch; coffee and tea will be provided.

Upcoming programs are as follows:

Feb. 7: Susan Arisman and Joan DeVee Dixon, "Nihon Geijutsuteki: Japanese Culture in a 21st Century World."

Feb. 14: Angelo Bucchino, "Post Holocaust Christian Understanding of Judaism."

Feb. 21: Barbara Hurd, "Beyond Assessment: A Gathering of Poems About Teaching and Learning."

The forum is sponsored by Catholic Campus Ministries, United Campus Ministries and Hillel. For more information, contact Rev. Larry Neumark at x7490.

Literature



Join in 'Date Night of Love Poetry' at AAC

FSU's Center for Creative Writing, in conjunction with the Allegany Arts Council, is pleased to announce its next event in the Literature Comes Alive series. The upcoming reading, "A Date Night of Love Poetry and Literature of the Erotic" will be held Thursday, Feb. 17, 7:30 at the Saville Gallery in downtown Cumberland, 52 Baltimore Street.

Come to listen, or join in this late Valentine's Day celebration by bringing your own favorite love or erotic poems and help us try to make a cold night hot in Cumberland. You can sign up to read that night at the event or in advance by contacting the Frostburg Center for Creative Writing.

This reading is free and open to the public. For more information, contact The Saville Gallery at 301-777-2787 or Gerry LaFemina at the Center For Creative Writing at x4024.

Film



Int'l Film: 'The Princess and the Warrior'

FSU's spring 2005 International Film Series begins with the German film "The Princess and the Warrior" on Tuesday,

Feb. 8, at 7 p.m. in the Lane University Center's Atkinson room 201. The series is sponsored by Center Stage.

"The Princess and the Warrior" is a mystical modern-day romance. Frankie Potente star as "Sissi," a mental hospital nurse leading an insulated life until fate puts her on a collision course with a handsome but troubled thief. This mystical movie represents a deeply felt testament to the power of love, which can lift a lonely nurse and a petty crook to the mythic stature of a princess and a warrior.

Other films scheduled for the spring semester include "LAuberge Espangole" on March 15, "Don't Tempt Me" on April 22 and "Blue Spring" on May 10. All film showings are free and open to the public. For information, contact the Lane University Center Information Desk at x4411.



Take Note

FSU and Md. Traditions Announce Partnership

Folklorist Hired to Lead Initiative

FSU's College of Liberal Arts and Sciences and Maryland Traditions officially announced a new initiative to celebrate the folk arts and folklife of Western Maryland.

This past summer, FSU began a three-year partnership with Maryland Traditions with a start-up grant of \$40,000. Maryland Traditions is a collaboration of two state agencies, the Maryland State Arts Council and the Maryland Historical Trust, and receives support from the National Endowment for the Arts. Dr. Rory Turner of MSAC and Dr. Elaine Eff of MHT co-direct Maryland Traditions, a program that supports communities to discover, share, preserve and sustain traditional arts and culture.

Dr. Kara Rogers Thomas, formerly of University of North Carolina-Asheville and Indiana University, has been appointed as the new resident folklorist for Western Maryland. In addition to conducting research and documenting communities and living traditions, Thomas is teaching "Folklore in Appalachia," a new course offered through the FSU Sociology Department. This course, and others in the future, will offer FSU students the opportunity to learn about Maryland's folk heritage through hands-on fieldwork. Thomas' other duties will include developing publications, audio features for radio broadcast, CDs, videos, Web sites and showcasing traditional artists in association with FSU's Cultural Events Series.

Thomas' work will complement a number of disciplines in FSU's College of Liberal Arts and Sciences, particularly its growing Ethnobotany program, by educating students and the community about folk medicine and herbs and helping local cultures preserve their environment and living traditions.

With the help of future grants and other revenue sources, the program in Western Maryland has the goal to be

self-sustaining by the end of 2007.

Folklorist Thomas invites individuals and groups to contact her with leads on local traditions. She can be reached at x3124 or by e-mailing krogerstthomas@frostburg.edu.

Rocks and Minerals on Display in Library

The Department of Geography and the Ort Library are pleased to present a display of highlights from the Department's rock and mineral collection.

The display, located on the third floor of the library, includes several museum-quality samples, including multiple varieties of quartz and fluorite. Samples of local interest are featured.

Rocks and minerals will be on display through spring break so stop in and take a look. For more information, contact MaryJo Price, at x4889.



Info Meeting Set for MAT Programs

FSU will present an information meeting for prospective applicants for its Master of Arts in Teaching programs, both elementary and secondary.

MAT - Elementary Program Coordinator Dr. Kim Rotruck will be at the University System of Maryland at Hagerstown, 32 W. Washington St., in room 124-125 on Tuesday, Feb. 15, at 6:30 p.m. to speak to prospective applicants for the two groups beginning studies in summer 2005.

The FSU Master of Arts in Teaching - Elementary program is offered at the new USM-H. The deadline for summer 2005 cohort applications is May 1.

The Master of Arts in Teaching - Secondary program is offered in Frostburg. The deadline for summer 2005 cohort applications is April 1.

FSU's Master of Arts in Teaching program is designed for career changers or recent college graduates who want to pursue a career in teaching. The full-time program that lasts just over a year provides its students with all the necessary coursework and classroom experience to obtain teacher certification in the State of Maryland.

The summer 2005 applicant admissions interviews will be scheduled for the evenings in April. For more information, call the FSU Graduate Services Office at x7053 or contact Rotruck at 240-257-2736 about the elementary program or Secondary Program Coordinator Bill Childs at x4216 about the secondary program.

FSU Foundation, Inc. Annual Meeting

The annual meeting of the FSU Foundation, Inc., was recently held at the Lewis J. Ort Library. At the meeting

Gladys Faherty, Frostburg, was re-elected to a second term as board president. Vice president will be Lawrence McKenzie, Lonaconing. Leonard Schwab, Cumberland, was elected secretary. Kenneth Kennedy, Frostburg, was named treasurer and James Frantz, Frostburg, was elected as assistant treasurer. Jack Aylor, FSU, was re-appointed as the executive director. New members elected to the board included Sam Griffith, National Jet Co., LaVale; Joseph Pace, Frostburg U Save, Frostburg; and Sherri Sensabaugh, Act Personnel Services, Cumberland.

The annual audit, as conducted by Hohing & Lewis, LLC, Certified Public Accountants, reported record revenues for the second consecutive year in the amount of \$2,867,785, up \$789,666 from the previous highest total. Management categorized \$1,009,460 to be from charitable gifts with \$624,928 directed to the endowment and \$135,624 to the FSU Annual Fund. Gifts-in-kind, investments and sponsored programs, including summer camps and other revenue-producing programs, are included in the revenue totals.

The FSU Foundation reports transfers and payments in support of university programs totaling \$1,272,700. Of that figure, \$333,640 was given for student scholarships, grants and student aid. Gifts-in-kind totaled \$447,500 and the remainder included events, equipment, supplies, reimbursements and other related program needs. The endowed assets now exceed \$7 million and are managed by The University of Maryland Foundation. UMF reported a total investment return of 16.2 percent for the fiscal year ending June 30, 2004, up sharply from 4.4 percent last year. The five-year return is 5.2 percent and the 10-year return is annualized at 13.1 percent.

The purpose of the FSU Foundation, Inc., is to support the educational mission of FSU. The board of directors is comprised of 40 members representing alumni and friends of FSU. The FSU Foundation provides opportunities for charitable giving, including direct and deferred gift programs.

SkillSoft: Find Out What You Don't Know

"Education is learning what you didn't even know you didn't know." - U.S. Historian Daniel J. Boorstin

You won't know what you're missing until you explore the hundreds of learning opportunities available through the SkillSoft e-learning program for FSU employees. Build a plan to enhance your existing skills and learn new skills. E-learning is yours for the taking from the nearest computer with no travel and no charge involved.

If you aren't taking advantage of the SkillSoft program yet, use



the SkillPort Quick Start document that has been e-mailed to all employees or contact the Office of Human Resources at x7487 to get started improving your skills today.

Holocaust Museum Trip

On Saturday, April 23, there will be a trip to the Holocaust Museum in Washington, D.C. All interested faculty, staff and students are invited to attend. A 49-passenger bus from Allegany College of Maryland will transport us. The bus will leave from ACM at 7 a.m. We would tour the Holocaust Museum and then be free for lunch and to see some sights. The bus will leave D.C. to return to Cumberland at 3 p.m. All reservations are on a first-come, first-served basis. This educational venture is sponsored by United Campus Ministry and Catholic Campus Ministry. Please address any questions or comments to Larry Neumark at x7490 or neumark@mindspring.com.

Environmental Photo Contest Under Way

The second annual environmental photography contest of the Environmental Planning and Land Management Institute is currently being held. The deadline for photographs (up to three 8" x 10" color or black and white) to be submitted is April 1, 2005. Entrants must be at least 11 years old and be a resident, employed or attend school in Allegany or Garrett County. The photographs must depict the natural beauty and appreciation of either Allegany or Garrett county. Last year's contest awarded over \$700 in cash, gifts and certificates. One of the first prizes for the 2005 photography contest is a digital camera. Applications and complete entry information can be obtained in the Geography Department, Gunter Hall room 202, or at the Maryland Bureau of Mines Laboratory, Dunkle Hall room 307, or on the FSU Web site. This contest is open to amateur photographers only. The awards ceremony will be held on April 21 at 5 p.m. in the Compton Science Center.

News for Spring 2005 MBA Applicants

The 2004-2006 Graduate Catalog is available at the Graduate Services office, 141 Pullen Hall. The revised MBA program requires that all students entering as of spring 2005 complete the GMAT (Graduate Management Admissions Test). Test registration information is available through the Educational Testing Services Web site at www.ets.org or by calling the FSU Computer-Based Testing Center, Sand Spring Hall, at x7990. The test is available as a computer-based examination, given at FSU Monday and Friday, 8 a.m. to noon, and Tuesday and Thursday, 1 to 5 p.m.

Points of Pride



Thirteen undergraduate social work students from FSU are interning with area human service organizations.

The students and their placements include **Sara Bell**, Allegany County Human Resources Development Commission; **Kara Dicken**, Maryland Salem Children's Trust; **Carrie Kennell**, Western Maryland Health System's Inpatient Behavioral Health Unit; **Keren Kidron**, Western Maryland Health System's Center for Counseling Services; **Cherise Mattheson**, Outpatient Addictions Clinic at the Allegany County Health Department; **Amy McCullough**, Heartland of Keyser; **Chris Moore**, Allegany County Department of Social Services, Family Preservation Services; **Amy Sarro**, Devlin Manor Health Care Center; **Laura Schultz**, Pressley Ridge; **Lauren Seippel**, YMCA Family Center; **Carrie Steyer**, Garrett County Department of Social Services; **Tara Usilton**, Allegany County Human Resources Development Commission, Homeless Services Program; and **Tamara Zeff**, the Jefferson School at Finan.

FSU student **Frankie Allen Revell**, a senior majoring in communications from Big Pool, Md., completed his practicum with United Campus Ministry. Revell served as the peer minister for United Campus Ministry under the supervision of Chaplain Rev. Lawrence A. Neumark.

Revell's duties consisted of leading worship services, holding Bible studies, counseling students and organizing campus ministry events. Revell's responsibilities gave him insight into Neumark's everyday activities. Neumark was impressed with Revell, saying, "Frankie Revell has served us quite well as our first peer minister. Through his unique gifts and graces, he has achieved some significant, ground-breaking accomplishments, ones that others will try to emulate. Finally, Frankie, a non-traditional student, has been a positive role model for his peers."

Get Involved



Spring Campus Involvement Fair Feb. 10

FSU's Campus Involvement Fair is coming to the Lane University Center on Thursday, Feb. 10, from noon to 2 p.m. The fair is an opportunity for campus departments, programs and recognized student organizations to inform the campus about opportunities for involvement in their areas. Groups can recruit new members, pass out information about their organization or upcoming events, distribute applications for job openings/leadership positions available with their group and conduct sign-ups for upcoming events.

Any recognized student organization or campus department is invited to have a table at the fair. All groups will receive one 8-foot table and four chairs.

Table registration forms are due no later than 5 p.m. on Monday, Feb. 7. You will receive a confirmation e-mail by Wednesday, Feb 9, with all the final details. For information, contact Tammi Wiley, Director of Student Activities, at x4151 or e-mail twiley@frostburg.edu.

Catholic Campus Ministry

CCM will have its Shrove Tuesday Pancake Dinner on Tuesday, Feb. 8, at 6 p.m. in the Osborne Newman Center's Bishop Murphy Hall. The group will also burn palm to make ashes for Ash Wednesday.

Jobs, Jobs, Jobs

Summer Upward Bound Positions Available

Upward Bound is seeking a head resident and tutor/counselors for its summer residential program on FSU's campus. Upward Bound is a federally funded program that encourages qualified Allegany County high school students to seek education beyond secondary school. The summer residence program provides the main focus and aims to provide students with a sample of the college experience. Tentative dates are from June 5 to July 22 (includes five days of training). Head resident (requires bachelor's degree) salary is \$2,800. Tutor/counselor salary is \$2,000. Room and board is provided. Deadline for applying is March 1. For more information, contact the Upward Bound office at x4994. www.frostburg.edu/clife/ubp



Scholarships

Education Department Scholarships Available

Education Department scholarship applications for undergraduate, graduate and MAT students are now available online at the FSU Web site (Educational Professions home page, student forms) for fall '05-spring '06. Deadline for application is March 1. Applications may be submitted to Dr. Joyce Wheaton, Framptom 207 on or before March 1. Hard copies of the application are available in Framptom room 207.

David Sanford Graduate Student Scholarship

The recipient of the David Sanford Graduate Student Scholarship must be enrolled full- or part-time as a graduate student, have previously been an FSU undergraduate and have received a varsity sport participation letter. An overall FSU grade point average of 3.0 or better is required. Get an application at the Office of Graduate Services, 141 Pullen Hall or call x7053. Deadline is March 1, 2005; award is \$500 annually.

F. Perry Smith Jr. Graduate Scholarship

The recipient of the F. Perry Smith Jr. Graduate Scholarship must have completed high school or the equivalent in either Allegany or Garrett counties in Maryland and be enrolled at FSU with an overall grade point average of 3.0 or better. The recipient must demonstrate financial need (completed FAFSA form). Get an application at the Office of Graduate Services, 141 Pullen Hall, or call x7053. Deadline is March 15; award is \$1,500 annually.

Volunteers



Students Offer Free Tax Return Preparation

Free help preparing 2004 tax returns is available through the IRS-sponsored VITA (Volunteer Income Tax Assistance) Program at FSU.

Help with basic federal and Maryland income tax returns will be offered from early February through early April by FSU's College of Business students who have been trained and approved by the IRS. Faculty members will oversee these student preparers.

The VITA program offers this assistance to taxpayers filing Form 1040EZ, Form 1040A, or a basic Form 1040 federal tax return. Volunteers will alert taxpayers to special credits and deductions for which they may be eligible. Electronic filing will also be available this year.

Appointments must be made in advance by calling Joyce Middleton, VITA site co-coordinator, at x4154. Students will work Saturdays from 11 a.m. to 3 p.m. in FSU's Framptom Hall (except for March 19 and 26). A drop-off service will also be available throughout the week.

Taxpayers arriving for an appointment should bring any tax packages mailed by the IRS and the state, Form W-2 from all employers, all Form 1099s, a copy of last year's returns, if available, and any other relevant information about income and expenses. Taxpayer and dependent social security numbers and birth dates are also required (especially for electronic filing).

Read to Succeed and Mathletics Needs You

Read to Succeed and Mathletics are accepting applications for new tutors.

Everyone is welcome. This is a great opportunity for Education and Social Work students to earn service hours. Read to Succeed provides two hours a week of free literacy support to children in grades K-8. Mathletics is the math component of the program and is offered to students in grades K-5.

Literacy Tutoring:

FSU Ort Library - Tuesdays or Thursdays, 5-7 p.m.

St. Michael's School - Tuesdays, 2:45-4:45 p.m.

Math Tutoring:

FSU Ort Library - Mondays or Wednesdays, 5-7 p.m.

St. Michael's School - Wednesdays, 2:45-4:45 p.m.

Route 40 Elem. - Wednesdays, 6-8 p.m.

Training workshops will be offered in early February. For more information, please contact Lesley Baker, Read to Succeed coordinator, at x7615.

Community



Scrapbooking Workshop

A free scrapbooking workshop will be held at the Frostburg Public Library on Thursday, Feb. 17, from 6 to 9 p.m. Faculty, staff, FSU students and the community are invited to participate. Please bring your own scrapbooking tools and supplies to work on your personal albums. For more information, contact the Frostburg Library at (301) 687-0790 or Lynn Ketterman at (301)687-0149 or e-mail lynn_ketterman@yahoo.com.

International



Info Meeting for Summer Study in Beijing, China

Students who are interested in taking a summer study program (three courses in GEP Biology 109, Conversational Chinese and Chinese Martial Arts) this summer led by Dr. Hongqi Li should attend an information meeting on Tuesday, Feb. 8, at 6 p.m. in Compton 232. For further information, please contact Dr. Li at x4168, visit his Web page at <http://faculty.frostburg.edu/biol/hli/Study-In-China/2005.htm>, or stop by the CIE.

Study Abroad Info at Lane University Center

Students who are interested in an overseas experience are advised to visit the Lane University Center foyer between 10 a.m. and 3 p.m. of Feb. 7, 21 or 23. The director of the Center for International Education and returning study abroad students will be available at a table to discuss study abroad options, costs, financial aid and how to apply. For further information, contact the CIE.

Study Abroad Programs

The Center for International Education offers a variety of ways for FSU students to see the world. In many cases, students register at FSU during a semester abroad and can take all financial aid with them and transfer credit back to FSU. For information on programs or scholarships, contact Dr. Amy Simes at the CIE in the Fuller

House on Braddock Road, x3091, asimes@frostburg.edu, or visit the CIE's Web page at www.frostburg.edu/admin/cie/cie.htm.

Apply Now for Summer, Fall Study Abroad

Students are encouraged to visit the CIE and pick up a study abroad application for summer and fall programs. Deadlines for both program application and scholarships are approaching. There are literally hundreds of programs available to FSU students. Additionally, FSU students may apply for the following faculty-led summer programs:

- China (see Dr. Li's Web page at <http://faculty.frostburg.edu/biol/hli/Study-In-China/2005.htm>)

- Belize
- Honduras
- Madagascar
- Malaysia
- Ireland Social Work
- England

Students may also apply for fall 2005 programs through the following FSU affiliates:

- Australia/New Zealand (visit www.australearn.com)
- England (Northumbria University - <http://northumbria.ac.uk/>)
- Many locations through AIFS (visit www.aifsabroad.com/)
- Many locations through ISEP (visit www.isep.org)
- Many locations through SIT (www.sit.edu/studyabroad/index.html)

Gilman Scholarships for Fall Study Abroad

The Institute of International Education (IIE) is currently accepting applications for the fall 2005 cycle of the Gilman Scholarship. The Gilman is open to all U.S. undergraduates in good academic standing who meet the criteria listed below:

- The applicant must be receiving a Federal Pell Grant or provide proof that he/she will be receiving a Pell Grant at the time of application or during the term of study abroad.

- The applicant is applying to or has been accepted into a study abroad program eligible for credit by the student's institution of higher education in the U.S.

- The applicant is studying abroad for a least four weeks in one country.

- The applicant is studying abroad in any country except Cuba or any nation currently under a U.S. Department of State-issued Travel Warning

- The applicant is participating in a fall 2005 study abroad program of up to one academic year that begins between the dates of July 15 and Oct. 15. Summer-only study abroad programs are excluded as the Gilman Scholarship does not have a summer award cycle nor are awards made for summer-only study abroad.

Applicants selected as award recipients will receive up to \$5,000 that can be used towards eligible study abroad program expenses.

Students apply online via the Gilman Web site (www.iie.org/gilman). The student online application deadline for the fall 2005 cycle will be April 4.



Safety Message

Van Drivers Safety Training Sessions Set

A number of Van Drivers Safety Training Sessions are scheduled for February.

- Tuesday, Feb. 8, 10:30 a.m. to 1:30 p.m., Lane 205/206
- Thursday, Feb. 10, 1:30 p.m. to 4:30 p.m., Lane 205/206
- Monday, Feb. 14, 9:30 a.m. to 12:30 p.m., Lane 205/206

You do not have to register to attend. All required material will be supplied.

FSU Events Calendar



MONDAY, FEBRUARY 7

- * Hadra Lecture Series, Drs. Susan Arisman & Joan DeVee Dixon, *“Nihon Geijustuteki: Japanese Culture in a 21st Century World”* noon Library 237
- * Leadership Workshop, *Communication Skills* . 7:00 p.m. Lane Atkinson Room

TUESDAY, FEBRUARY 8

- * Women’s Basketball: Mt. Aloysius College 6:00 p.m. Home
- * Int’l Film, *“The Princess and the Warrior”* 7:00 p.m. Lane Atkinson Room
- * Men’s Basketball: Mt. Aloysius College 8:00 p.m. Home

WEDNESDAY, FEBRUARY 9

- * FMLA V-Day Clothes Line Project 6:00 p.m.-10:00 p.m. Lane 140-141
- * RHA Meeting 7:00 p.m. Lane Atkinson Room
- * UCM Meeting 7:30 p.m. Library 237
- * CVNS Information Meeting 7:30 p.m. Cumberland Hall 004-005

THURSDAY, FEBRUARY 10

- * Spring Involvement Fair Noon-3:00 p.m. Lane ARMAH
- * NPC Open House 7:00 p.m. Lane ARMAH

FRIDAY, FEBRUARY 11

- * Edgewood Commons Halo Tournament 1:00-10:00 p.m. Main Lounge
- * Women’s Basketball: Medaille College 6:00 p.m. Home
- * Men’s Basketball: Medaille College 8:00 p.m. Home
- * UPC Comedy: Owen Smith & Steve Caouette 8:00 p.m. Lane ARMAH

SATURDAY, FEBRUARY 12

- * Men’s/Women’s Indoor Track: Bucknell-Bison Open & Pentathlon Lewisburg, PA
- * Women’s Basketball: Hilbert College 4:00 p.m. Home
- * Center Stage X-Box Tournament 5:00 p.m. Lane Atkinson Room
- * Men’s Basketball: Hilbert College 6:00 p.m. Home
- * UPC, *Scratch Track* 8:00 p.m. Derezinski Lounge/Loft
- * NBS Valentine’s Day Cabaret 9:00 p.m. Lane ARMAH

SUNDAY, FEBRUARY 13

- * CCM Mass Noon & 8:00 p.m. Cook Chapel
- * Planetarium, *“Sky, Astrology and Romance”*... 4 & 7 p.m. Tawes Hall

* Open to the public. Questions? – Call 301-687-4411. All information subject to change.

FSU is committed to making all of its programs, services, and activities accessible to persons with disabilities. You may request accommodations through the ADA Compliance Office, 302 Hitchins, 301-687-4102, TDD 301-687-7955.

Safety First – Others are Counting on You

