

Local population

[Summary of the 6th ICPS Conference](#)

[New Updates about the conference](#)

The biannual ICPS conferences of the [International Carnivorous Plants Society \(ICPS\)](#) are the largest world gatherings of scientists and enthusiasts working on carnivorous plants. They provide a great opportunity for participants to publicize their research and meet other scientists in the field.

The 6th ICPS conference will take place at [Frostburg State University](#), Maryland, USA, on June 1-5, 2006. Frostburg is about two hours driving distance from Washington DC, and is located in the beautiful Appalachian mountains of western Maryland where local carnivorous plant populations can be found. Faculty and students at the [Department of Biology](#) and the [College of Liberal Arts and Sciences](#) of FSU are hoping you will come enjoy the extremely pleasant early summer season with us.

This conference expects [presentations](#) in study of the plant morphology, evolution, molecular research, medicinal research, ethnobotany, ecophysiology, conservation, development, and horticulture, etc. The conference has two [field trips](#). See the [Conference Agenda](#).

It will be free for visiting [vendors](#).

Do you want to help to tell the conference to your friends who maybe interested in coming? Print or forward a [Flyer of the 6th ICPS Conference](#) to your friend. For further information, please contact hli@frostburg.edu.



This Conference is sponsored by:

[Siggi and Irmgard](#) who provided free movie (of carnivorous) show after reception, his movies are available at www.hartmeyer.de.

[T-Shirt of the Conference for Sale](#)



[Goodie Bag of the Conference for Sale](#)



[Check about the weather at Frostburg, Maryland, USA, 21532](#) and [More Details](#)



The 6th Conference of International Carnivorous Plant Society

JUNE 1-5, 2006 FROSTBURG STATE UNIVERSITY, MARYLAND, USA

Summary of the 6th Conference of ICPS

- HOME
- CALL FOR PAPERS
- REGISTRATION
- LODGING
- TRANSPORTATION
- FIELD TRIPS
- OTHER LINKS
- CONTACT US



Local population

The 6th Conference of International Carnivorous Plant Society has been successfully completed, at Frostburg State University (FSU), June 1-5, 2006. We have more than 80 registered attendees from Canada, UK, Germany, mainland of China, Taiwan, Czech Republic, and USA. More than a dozen FSU faculty, staff, and students showed up to assist and/or attend at the presentations and field trips. Totally, we have about 100 people involved in the conference, plus more than 100 visitors from the local cities and some even drove a couple of hours for visiting the conference. All visitors were amazed by the fantastic carnivorous plants, especially a few kids with their parents learned a lot from the educational workshops, while some kids were excited when their parents bought some Venus flytrap, sundews, etc. for them. At least two local newspapers reported the conference (e.g., [Cumberland Times-News](#)).

We had eighteen academic presentations, one invited talk, three posters, two educational workshops, and one art workshop, as well as one fossil plant display. We also have seven vendors and four display booths, brought a lot of marvelous plants from Washington DC, Virginia, Colorado, Connecticut, Boston, and even Germany. All participants were very happy for all arrangements, enjoyed the happy mood of the conference in the pleasant Compton Science Center.

[The presentations](#) ranged 1) from a report of the oldest carnivorous fossil record, 125 million year old pitcher plants from China, to a phylogenetic review of all modern carnivorous plants; 2) from the traditional healing with *Nepenthes* in Madagascar, various medicinal applications of other carnivorous plants, to examinations of some molecules from carnivorous plants, with Terahertz spectroscopy; 3) from the traditional observation/documentation with lens and light microscope to the SEM with a low vacuum model; 4) from the beautiful *Heliamphora* on the mysterious table mountains of Tepuis in South America to lovely tiny *Pinguicula* in the high Arctic; 5) from tracing the history to the conservation of some CP populations; 6) from ecology, physiology, and development to horticulture of various carnivorous plants. All of these assembled the conference with research, education, and art appreciation of carnivorous plants.

For the Best Plant Show, Jeremiah Harris, of the [Colorado Carnivorous Plant Society](#), won the first place with his beautiful *Nepenthes*, Michael Szesze of the [Carnivorous Plant Nursery](#), won the second place with a flowering *Heliamphora*, while Matthew Opel, Department of Ecology and Evolutionary Biology, University of Connecticut, won the third place with an old *Roridula*.

We had a lot of "fights" in the silent auction and a voice auction, thanks to all donors. After the voice auction we enjoyed the banquet and [Dr. Martin MacKenzie's](#) talk on his tracing the history of local carnivorous plant populations.

We had six DVD shows of documentary movies on research and a field trip to carnivorous plant sites in Arctic. We even watched the fiction movie "Little Shop of Horrors" after the reception.

Two field trips went through extremely well. We have more than 40 people went to the local field trip to three sites with pitcher plants and sundews. The cloudy weather was very pleasant, and we had a lot of fun. Our enthusiastic carnivorous plant lovers would not leave the Big Run Bog until a rain came to drive them a big run to our bus. About 30 people went to the eastern field trip to Mike Szesze's [Carnivorous Plant Nursery](#) and the [Meadowview Botanical Research Station](#), which was also very educational and highly appreciated by participants.

All participants and visitors had a lot of fun. The Chair of the Mass Communication Department led a team filmed our conference, and the documentary film will be used for a research window in a museum to be completed this summer in the same Compton Science Center, where we had our 6th ICPS Conference.

To organize this conference, Dr. Douglas Darnowski, Dr. Hongqi Li, Ms. Teresa Golembiewski, and Dr. Stephen Williams have done a lot of organizational planning. For his tremendous contribution to the conference, ICPS awarded Dr. Li a certificate and a watch, both have a restoration of his fossil pitcher plant *Archaeamphora*. Hongqi and Terre also worked on the T-shirt and goodie bag for the conference ([a few surplus T-shirt and Goodie are still available at the website](#)).

Finally, we are very grateful for all facilities and transportation provided by Frostburg State University, for the reception offered by the College of Liberal Arts and Sciences, FSU, and for the great support from more than two dozens of faculty, staff, and graduate students of the Biology Department and other departments, who were involved in organizing before the

conference and providing assistance during the conference. We also thank Indiana University Southeast, JEOL SEM, and Siggie and Irmgard for their sponsorships to the conference.



The 6th Conference of International Carnivorous Plant Society

JUNE 1-5, 2006 FROSTBURG STATE UNIVERSITY, MARYLAND, USA

Agenda of 6th Conference of ICPS

Date	Time	Location	Activities
6/1/06 Thursday	13:00-17:50	CH 2nd Atrium	Registration
	18:00 -	CH 3rd Atrium	Dinner (meal plan holders)
	18:30 -	CH 2nd Atrium	o Reception (offered by the College of Liberal Arts & Sciences, FSU) Free to registered, cash bar for wines o Open Ceremony .
	19:30 -	CH 226	o DVD : <i>Drosera: Snap-Tentacles and Runway Lights</i> o DVD : <i>The Carnivorous Syndrome in 3D</i> o Movie : <i>Little Shop of Horrors</i>
6/2/06 Friday	07:00-08:45	Appalachian Station	Breakfast (meal plan holders)
	09:00-13:00	CH 2nd Atrium	Vendors and display booths.
	09:00-11:50	CH 328	Poster session
	09:30-10:20	CH 358	Educational Workshop-1
	10:30-11:20	CH 358	Educational Workshop-2
	12:00-13:00	Appalachian Station	Lunch (meal plan holders)
	13:00-14:30	CH 226	Session 1 : Student Rresearch Symposium
	14:30-15:00		Break (meal plan holders)
	15:00-16:50	CH 226	Session 2 : Morphology, evolution, and phylogenetics.
	16:50-18:30	CH 2nd Atrium	<ul style="list-style-type: none">Vendors and Display Booths.Show for the Best Plants.
6/3/06 Saturday	18:30-	Appalachian Station	Dinner (meal plan holders)
	19:30-22:30	CH 358	Art Workshop
	07:00-08:15	Appalachian Station	Breakfast (meal plan holders)
	08:30-09:30	CH 226	Session 3 : Herbal Medicinal Research Symposium
	09:30-10:00		Break
	10:00-11:50	CH 226	Session 4 : Ecology Symposium (IUS sponsored)
	12:00-13:00	Appalachian Station	Lunch (meal plan holders)
	12:00-13:00	CH 2nd Atrium	Vendors and Display Booths .
	13:00-14:50	CH 226	Session 5 : Physiology & development
	14:50-15:00		Break
6/4/06 Sunday	15:00-16:50	CH 226	Session 6 : Conservation
	16:50-18:30	CH 2nd Atrium	<ul style="list-style-type: none">Vendors and Display Booths.Public Auction
	18:30-	Appalachian Station	Banquet (separate fee) with Dr. Martin MacKenzie DVD : <i>Nepenthes@Borneo Exotics</i>
	07:00-08:15	Appalachian Station	Breakfast for people with meal plan.
	08:30-09:30	CH 226	Session 7 : Horticulture - Research -Education
	09:40-18:00	Local Field Trip with lunch at the Deep Creek Interpretation Center.	
	12:00-13:00	Lunch at Appalachian Station for other meal plan holders.	
	o Optional: Vendors and display booths at CH 2nd Atrium for public o Shuttle to WBI Airport for participants who reserved for the shuttle		
6/5/06 Monday:	6:30 am- Eastern Field Trip Shuttles to the BWI Airport for participants who reserved for the shuttle.		

Local population

[A printable program with details in MS Word format](#)

Available computer and other facilities:

- Facilities for Presentation: LCD, Elmo, VCR, DVD, White Board, Internet Connection in the Compton Science Center.
- 30 computers with Internet connection and printer (CH 330).
- Residence Halls with Internet connection.



The 6th Conference of International Carnivorous Plant Society

JUNE 1-5, 2006 FROSTBURG STATE UNIVERSITY, MARYLAND, USA

Reistration: The Deadline for Early Registration was extended to April 16, 2006.

Regular Registration	\$100 before April 15, 2006	\$150 after April 15, 2006
Student Registration	\$50 before April 15, 2006	\$75 after April 15, 2006
Local Field Trip	\$15 per person	\$20 per person after April 15, 2006
Eastern Field Trip	\$30 per person	\$35 per person after April 15, 2006
Daypass Registration	\$20 per person	\$20 per person
Vendor option 1	\$100 Flat Fee	\$110.00 after April 15, 2006
Vendor option 2	\$25 + 5% of total receipts	\$25 + 5% of total receipts
Display only booth	\$25 per person	\$30.00 after April 15, 2006
Art Workshops	\$20 per person	\$20 per person (upon space)
Educational Workshop	\$25 per person	\$25 per person (upon space)

Online Registration for the Conference, [Lodging on Campus](#), Vendors, and other activities/items is open now. Please have your email address and credit card ready, then [CLICK](#) here to start your online registration.

Local popultation



The 6th Conference of International Carnivorous Plant Society

JUNE 1-5, 2006 FROSTBURG STATE UNIVERSITY, MARYLAND, USA

Dormitory Lodging

Lodging for the conference is available in the [Cambridge Hall](#) of Frostburg State University. Single and double rooms are available at \$35.00 US per night for a single, \$25.00 US per night for a double. All rooms are air-conditioned and have linen delivered to the room. Washers and dryers are available in each residence hall for laundering clothes. Smoking is not permitted in the rooms.

Meals

Meals for conference participants who purchase a meal plan will be served at the Applachian Station. The cost for the meal plan is \$100, including all meals, breakfast, lunch, and dinner from 6/1/06 evening to 6/4/06 noon, and including the banquet on 6/3/06.

Below is a description of meal services available on the Frostburg State University campus: Chesapeake Dining Hall, the primary resident dining facility, offers tasteful and exciting meals. Pizza and pasta, salads and desserts, burgers and "the old familiar stand-bys", cereals, specialty bars and beverages are constant offerings. Vegetarian meals are always available.

On Campus Housing	\$35 /night for one room
On Campus Housing	\$25/night for ½ double room
Meal Plan	\$100 from 6/1 evening to 6/4 lunch
Banquet on June 3, 2006	\$40, if you did not buy the meal plan

Online [Registration for the Conference](#), Lodging on Campus, Vendors, and other activities/items is open now, please have your email address and credit card ready, then [CLICK](#) here to start it.

For other hotels and motels in Frostburg or around Frostburg, please [click here](#).



**The 6th Conference of
International Carnivorous Plant Society**
JUNE 1-5, 2006 FROSTBURG STATE UNIVERSITY, MARYLAND, USA

2006 Frostburg, Maryland, USA

- HOME
- CALL FOR PAPERS
- REGISTRATION
- LODGING
- TRANSPORTATION
- FIELD TRIPS
- OTHER LINKS
- CONTACT US

Local population

Transportation

1. **We recommend you use [BWI - Baltimore Washington International Airport](#)** since **Frostburg State University** will provide us shuttle transportation between the airport and FSU with tips to drivers (**\$20 for one way**, about 140 miles). **Because we have relatively few participants requested for using the shuttles (most people drive to Frostburg), we decided to remove the shuttle schedules, and provide a more flexible service. If you need the service please send email to hli@frostburg.edu as soon as possible. We will only guarantee the shuttle for people contacted us and got our confirmation.**
Attention: Please tell us your arriving flight numbers, time, and dates, so we can meet you at the terminal gate. When we go to pick you, **we will wear a conference T-shirt (see the pattern by clicking [here](#))** for you to recognize us. Please also tell us your return flight date and time so we can arrange the shuttles for you. Call Hongqi at 301-687-4168 if need and he can contact drivers.
2. **Recommended Airline: American Airlines** is the official airline of the 6th ICPS Conference. **American Airlines** offers us a **5% discount on AA airplane tickets**. When you book your airplane ticket, mention **A2156AA** to get the discount on AA flights via:
 - [BWI - Baltimore Washington International Airport](#),
 - [IAD - Washington Dulles International Airport](#),
 - [DCA - Ronald Reagan National Airport](#), and
 - [Pittsburgh International Airport \(PIT\)](#).
 - This **A2156AA** is **validated** for AA flights between **May 29, 2006 - June 11, 2006**.
 - You could call **1-800-433-1790** for assistance with reservations and ticket purchase.
3. How to get to BWI if you have to arrive in at DCA or IAD:
 - If you have to fly in at [DCA - Ronald Reagan National Airport](#), you can take the **Yellow Line** of Metrorail to the [L'Enfant Plaza station](#) where you change to Green Line till to go to the Metrorail's [Greenbelt station](#). Then you take [Metrobus route B30](#) to go to BWI Airport with \$3 or less.
 - If you fly in at [IAD - Washington Dulles International Airport](#), You take [Metrobus route 5A](#) to go to [L'Enfant Plaza station](#) where you change to Green Line till to go to the Metrorail's [Greenbelt station](#). Then you take [Metrobus route B30](#) to go to BWI Airport with \$3 or less.
 - Please check <http://www.commuterpage.com/metroconnect.htm> for further information about Metrobus and Metrorail.
4. **Recommended Car Rental:** Avis offers us a **group discount** in the 5-25% range.
 - The group **AWD#** will automatically match or beat any other Avis discount available, regardless of the program type, guaranteeing the attendee the lowest rate possible with Avis.
 - The group discount is available from 7 days before until 7 days after the meeting dates with unlimited free mileage.
 - To reserve a car, contact Avis at **1-800-331-1600** and use your Avis Worldwide Discount (AWD) number **J907258**.
 - Or reserve it online by [clicking here](#) this link or www.avis.com, as long as you use our special group number **J907258**.
5. If you plan to rent a car, you may also fly in at [Morgantown Airport, Morgantown, West Virginia, United States](#) (This is the nearest, 70 miles, and it takes only one hour of driving to Frostburg), or fly in at [PIT- Pittsburgh International Airport](#) (It is about 130 miles to Frostburg).
6. **By Train?** You could come from Washington DC and Pittsburgh by train [Amtrak to arrive at Cumberland](#). It is 10 miles from Cumberland to Frostburg. However, you may need to come earlier since it may be delayed beyond the scheduled time. Check it out at the [Amtrak ticket server](#).
7. [Click here for driving direction](#). [Click here](#) for some tips we prepared for your travel to the United States.

If you need further information, please send email to hli@frostburg.edu.



The 6th Conference of International Carnivorous Plant Society

JUNE 1-5, 2006 FROSTBURG STATE UNIVERSITY, MARYLAND, USA

Field Trips (We are organizing two field trips)

1. [Field trip in eastern coastal region](#) on Monday, June 5, 2006.
2. **Local Field Trip:** It will possibly start with a lunch in vehicle on the way, Sunday, June 4, 2006, and it would take total 7-8 hours.

On Saturday evening, [Dr. Martin MacKenzie](#) would introduce his study on the history of local native *Sarracenia purpurea* that were transplanted from High Point Lake to several places in Pennsylvania (PA), Western Maryland (MD), and West Virginia (WV) when the [High Point Lake](#) was built up in 1946. This field trip will include the High Point Lake and several of the transplanted populations of the pitcher plants at [Mount Davis](#), [Deep Creek Lake](#), [Cranesville Swamp](#), and [Big Run Bog](#). We will see *Sarracenia purpurea*, sundews, and many other interesting plants. Click on the name of each site for further details and pictures of local plants.

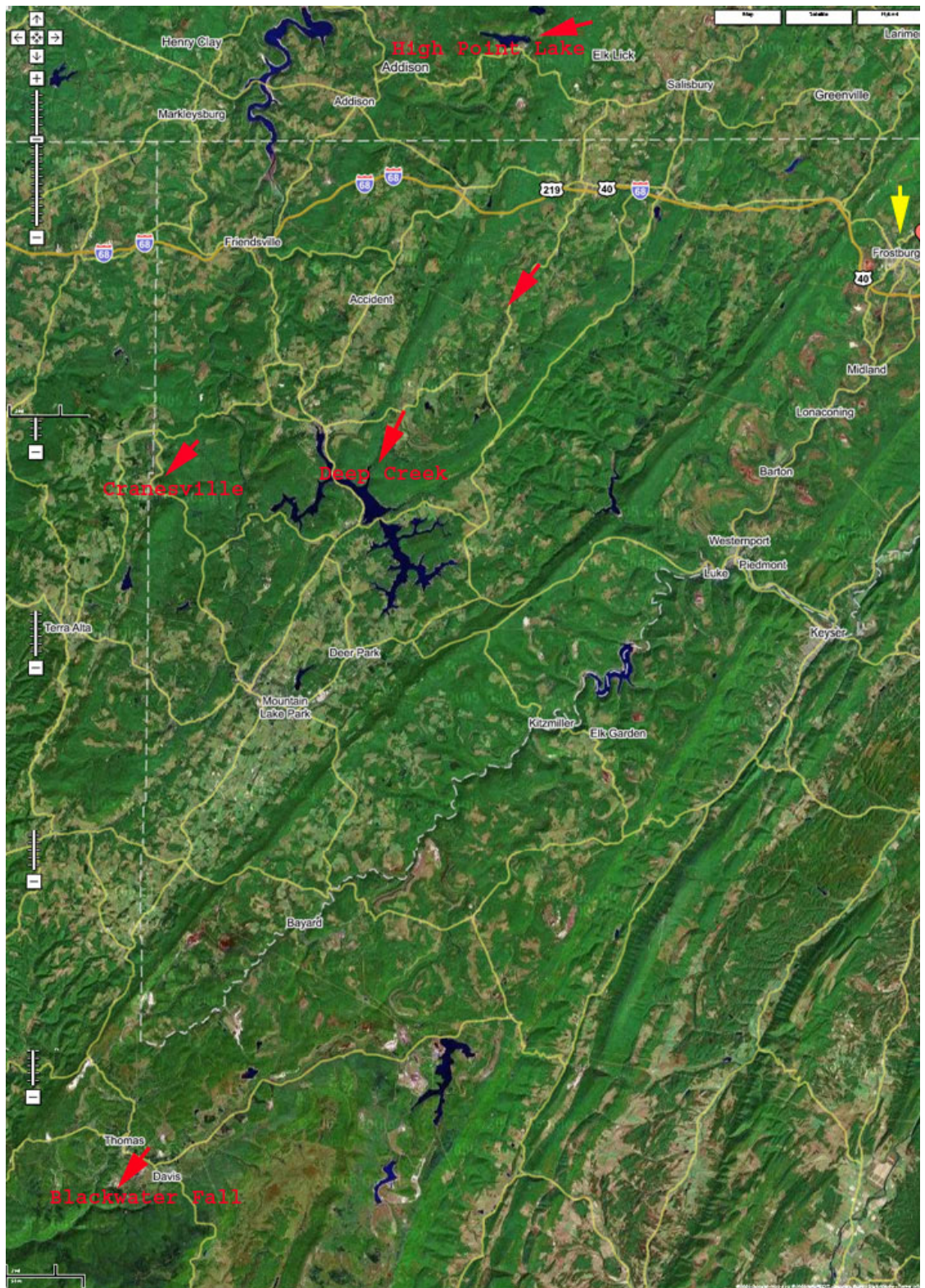
Deep Creek Lake is a beautiful scenery area, which features hunting, fishing, boating, and rafting in the summer, attracting visitors from all over the country. **Albert Einstein** visited the Deep Creek for two weeks in summer 1946. Big Run Bog located a couple of miles above the Blackwater Fall in Tucker County, West Virginia. We will stop by these places for short breaks (see the map 1 below).

Attention: For this field trip, please wear boots, long pants and long sleeve shirts, as we may walk through some bushes to some swamp areas.

Map with local field trip sites



Local population





The 6th Conference of International Carnivorous Plant Society

JUNE 1-5, 2006 FROSTBURG STATE UNIVERSITY, MARYLAND, USA

Links to related sites

1. [Click here](#) for some tips prepared for your travel to the United States
2. A link to **an article about the conference** on local [Cumberland Times-News](#)
3. General Information about ICPS <http://www.carnivorousplants.org/>
4. Other Carnivorous Plant Societies:
 - o The Carnivorous Plant Society <http://www.thecarnivorousplantsociety.org/>
 - o Australian Carnivorous Plant Society <http://www.acps.org.au/>
 - o The Victorian Carnivorous Plant Society <http://www.vcps.au.com/>
 - o Japanese Carnivorous Plant Society <http://homepage3.nifty.com/jcps/>
 - o New Zealand Carnivorous Plant Society <http://www.math.auckland.ac.nz/~waldron/NZCPS/>
 - o Scandinavian Carnivorous Plant Society <http://www.murevarn.se/scpseng.html>
 - o Meadowview Biological Research Station <http://www.pitcherplant.org/>
 - o New England Carnivorous Plant Society <http://www.necps.org>
 - o [Bay Area Carnivorous Plant Society](#)
 - o [Edinburgh Carnivorous Plant Society](#)
 - o [South East PA Carnivorous Plant Society](#)
 - o [Colorado Carnivorous Plants Society](#)
 - o [North American Sarracenia Conservancy](#)

HOME

CALL FOR PAPERS

REGISTRATION

LODGING

TRANSPORTATION

FIELD TRIPS

OTHER LINKS

CONTACT US

Local population

Web Page Manager: hli@frostburg.edu Copyright | [Privacy](#)
Frostburg State University, 101 Braddock Road, Frostburg, MD 21532-2303.



The 6th Conference of International Carnivorous Plant Society

JUNE 1-5, 2006 FROSTBURG STATE UNIVERSITY, MARYLAND, USA

HOME

CALL FOR PAPERS

REGISTRATION

LODGING

TRANSPORTATION

FIELD TRIPS

OTHER LINKS

CONTACT US

Organizing Committee

Name	6th ICPS	Institution	Email & Website	Telephone
Doug Darnowski	CO-Chair	Indiana University Southeast	ddarnows@ius.edu http://homepages.ius.edu/DDARNOWS/	(812) 941-2657
Hongqi Li	CO-Chair	Frostburg State University	hli@frostburg.edu http://faculty.frostburg.edu/biol/hli/	(301) 687-4168
Terre Golembiewski	Educational Workshop	UW-Whitewater	golembit@mail.uww.edu http://academics.uww.edu/biology/	(262) 472-5135
Stephen E. Williams	Member	Lebanon Valley College, PA	williams@lvc.edu http://www.lvc.edu/biology/	(717) 867-6179

Local Committee

Name	Department	Tel Phone
Dr. Joe Hoffman	Dean of College of LAS	
Dr. Cindy Herzog	Acting Associate Dean of LAS, FSU	(301) 687-4142
Ms. Linda Steele	Administrative Specialist, College of LAS, FSU	(301) 687-4137
Dr. William Seddon	Chair of Biology department, FSU	(301) 687-4707
Dr. Martin MacKenzie	USDA Forest Service, Morganton	
Dr. Ronald Barry	Professor, Biology department, FSU	
Dr. Thomas Serfass	Associate Prof. Biology dept, FSU	
Dr. William Pegg	Associate Prof. Biology dept, FSU	
Dr. Linda Lyon	Assist Prof. Biology department, FSU	(301) 687-4213
Dr. Frank Ammer	Assist Prof. Biology department, FSU	
Mr. David Treber	Director, Office of Conferences & Events, FSU	(301) 687-4020
Mr. Prank Peto	Director, Research and Sponsored Program, FSU	
Mr. Jack Aylor	Director of Development, FSU	
Ms. Liz Medcalf	News and Media Services, FSU	
Mr. Brian Wilson	Center for Instructional Technology (CIT), FSU	
Ms. MaryJo Price	Special collection, Library, FSU	

Local population