

## NEWS FROM THE DAVID M. GILLESPIE SPECIAL COLLECTIONS AND J. GLENN BEALL ARCHIVES

2022  
ISSUE 1

### INSIDE THIS ISSUE:

- Words from Special Collections Librarian/Archivist
- Mountain Ridge Class Visit
- The Pansy S. Atkinson Exhibit
- New Collections Homepage
- Interviews with Staff : Dr. Mary Anne Lutz and Julia Seddon
- Interview with a Researcher: Nick Gardner
- New Collections
- Contacts

Visit us on the web

[www.frostburg.edu](http://www.frostburg.edu)

### Words from Special Collections Librarian/Archivist



We can view 2022 as a good year for transitioning back to routines we followed before the pandemic. FSU shifted back to fully in-person classes after an academic year of Hybrid classes, and students began to spend more time on campus. Likewise, we started to see more in-person researchers utilize the Special Collections and Archives for their research projects.

### Mountain Ridge Class Visit

We were pleased to be able to host the Mountain Ridge High School Historical Research Methods class. This year, the students are focusing on Western Maryland Women's History. Previous research topics include : The Vietnam War, the Luke Mill and the Western Maryland coal mining industry. The class utilized the Pansy Atkinson Collection, documents related to our two women Presidents Lillian Compton and Dr. Catherine Gira, and viewed documents related to working women in Allegany County industries. Each year, MRHS students utilize primary source materials and conduct oral histories to create a documentary available for streaming or on DVD. The documentary will also be screened at the Frostburg Palace Theatre in May.



## The Pansye S. Atkinson Exhibit

One of our bigger projects this year was working with William O'Boyle, a senior English major, to commemorate the achievements of Mrs. Pansye S. Atkinson, who died in February of this year. After connecting through Dr. Amy Armiento's African American Literature Class, William volunteered to create an exhibit showcasing Mrs. Atkinson's many achievements to the FSU community. Pansye S. Atkinson and her husband, William R. Atkinson arrived to FSU in 1969. Mrs. Atkinson was initially hired as FSC's Desegregation Officer through a state decree to desegregate higher education while Mr. Atkinson worked in recruitment. Through their diligent efforts, FSC and in turn FSU evolved into the diverse campus it is today. Mrs. Atkinson dedicated 36 years to the University. She specialized in student mentorship, research on diversity and retention in higher education, and planned many events and guest speakers



Will O'Boyle (exhibit curator), Carmen Jackson and Bill Curtis. Joni Smith, FSU Senior Graphics Designer, designed the poster for the exhibit.

related to diversity, equity and inclusion.

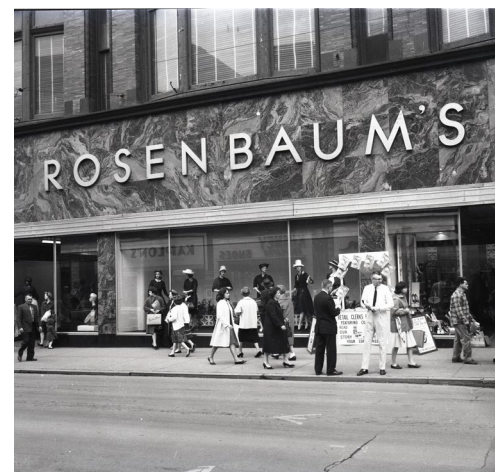
The exhibit attracted the attention of Mr. Bill Curtis, one of Mrs. Atkinson's students, who outreached with other alumni to view the exhibit; Mr. Curtis also attended the Undergraduate Symposium, where William O'Boyle presented his research. Mr. Curtis and other alumni then worked with the Foundation to establish the William R. and Pansye S. Atkinson Legacy Scholarship so the Atkinsons'

legacy could continue to benefit students at FSU. In September, Mr. Curtis worked with Carmen Jackson, former Assistant to the Vice President of Student and Educational Services and Director of the Diversity Center, to acquire the remainder of Mrs. Atkinson's papers to be integrated into the Pansye S. Atkinson Collection. The collection highlights minority issues from the 1970s-90s and is an excellent research collection regarding Black issues at FSU during that time.

## New Collections Homepages

We recommend you check out our new Collections pages on our [Special Collections](#) and [Archives](#) websites. We have recently updated our collections descriptions and added finding aids for all processed archival collections. If you find that any of our collections would make a good candidate for student research, we welcome any and all class visits. Our archival

collections are excellent resources for primary source research. In 2023, we have scheduled two classes utilizing our 19th century materials and Pansye Atkinson Collection. Please contact the [Special Collections Librarian/Archivist](#) to set up a class visit.







Dr. Mary Anne Lutz



Cas Taylor and Willie Nelson  
at Rocky Gap Music Festival



Cas Taylor with basketball player  
at 1966 Award Ceremony

## Interviews with Staff: Dr. Mary Anne Lutz

Dr. Mary Anne Lutz - Library Services Specialist, J. Glenn Beall Archives

*Dr. Mary Anne Lutz, Professor Emerita of English, taught at FSU from 1988 to 2019, specializing in 19<sup>th</sup>-century Transatlantic literature and composition. In Fall 2019, Dr. Lutz began working at the Ort Library. In the Fall semester of 2022, Dr. Lutz completed processing the Cas Taylor collection, which we received in fall 2021.*

The Casper R. Taylor Collection contains documents, photographs, and memorabilia of his work as Delegate to the Maryland General Assembly (1974-2003) and Speaker of the House of Delegates (1994 to 2003). The collection documents many of Taylor's initiatives to promote the Western Maryland region and to create economic opportunities, develop infrastructure, and bolster tourism to this part of the state. Taylor's "One Maryland" vision during the Parris Glendening administration sought to invest in "economically distressed" regions of the state: Maryland, Baltimore City, and the Eastern Shore. Documents include Taylor's legislative files, research files, and financial records. Approximately 2,000 photographs illustrate Taylor's work in the House of Delegates and his previous role as co-manager (later manager) of the Cas Taylors' Hall of Fame. The Collection also includes photographs and memorabilia from the Cas Taylors' Hall of Fame Restaurant in Cumberland and Dapper Dan Hall of Fame, honoring local and regional athletes.

*What did you find interesting about the Cas Taylor Collection?*

Learning about the sheer breadth of Cas Taylor's accomplishments aiding Western Maryland and other economically distressed parts of the state, such as Baltimore City. I also realized how much you should know to be an effective member of the House of Delegates. A delegate oversees and assesses a broad range of bills—bills pertaining to economic development, the environment, health and social programs, government ethics, etc. Working with the collection brought home how much Taylor helped Western Maryland build an infrastructure that would connect what were once remote, rural counties to the rest of the state, promoting job creation and investment.

*What did you find surprising about Cas Taylor?*

He was a Democrat from a conservative area of the state, and he could build consensus among delegates, working across party lines to get bills passed, to get ambitious projects underway and completed.

*Why is the Cas Taylor Collection Important?*

Because so much of his work predated popular access to the internet, many of his achievements are in danger of being forgotten. He was very important to the people of Western Maryland and Maryland as a whole. Everyone acknowledges him as a highly capable and effective Speaker, a strong advocate for the needs of Western Maryland.

## Interviews with Staff: Julia Seddon

Julia Seddon – Student Assistant, J. Glenn Beall Archives

*Julia Seddon is a 3<sup>rd</sup> year History Major at FSU. She also is minoring in Cultural Anthropology, Political Science and Geography. She is a Percussion Staff member at Mountain Ridge High School and plays mallet instruments with the FSU percussion ensemble. Her favorite percussion instrument is the marimba. She has worked in the Beall Archives since January 2022.*



Julia Seddon showcases her favorite pamphlet in the Meyers Collection.



George A. Meyers



Illustration by Hugo Gellert in *Century of the Common Man*

George A. Meyers, 1912-1999, was a Lonaconing native descended from a family of local miners. In the 1930s, he worked at the Celanese Corporation of America textile plant near Cumberland, MD and was instrumental in its unionization. In the late 30s he became increasingly active in the Congress of Industrial Organizations (CIO). Following three years' service during WWII in the Army Air Corps, Meyers returned to MD and became the Labor Secretary of the Communist Party of MD. As a result of his Communist affiliation and outspoken opposition to the Korean War, he was convicted under the provisions of the Smith Act in 1952 and spent 3 1/2 years in a federal prison. In 1965 he was elected Labor Secretary of the CPUSA, a position he held until his death in 1999.

The George A. Meyers Collection includes 44 unique manuscript collections and nearly 15,000 books on Marxism, Leninism, Communism, Socialism, the Soviet Union, labor, unions, women's rights, and US civil rights. The Pamphlet Collection represents one of the most unique portions of the Meyers Collection. It consists of over 5,000 pamphlets, flyers and brochures representing the Communist Party, Socialist, and other leftist movements.

*What did you find interesting about the George A. Meyers Collection?*

My favorite part of the collection is the pamphlet collection. We have close to 6000 pamphlets. While processing some additions to the pamphlet collection, I discovered a very rare pamphlet entitled *Century of the Common Man* which featured two speeches by Henry A. Wallace and illustrations by Hugo Gellert. I liked the illustrations in particular.

*What did you find surprising?*

The size of the Meyers Collection in general (190 linear feet) and the fact that few people know about it. There are probably many cool project ideas that researchers can utilize.

*Why is the George A. Meyers Collection important?*

George Meyers was local. It was very cool that he had a high place in the Communist Party and FSU has his papers along with over 40 other collections as a part of the Meyers Collection. A lot of people don't know much about the Communist Party besides what they hear on mainstream news, but this collection has many unique and authentic materials.



## Interview with a Researcher: Nick Gardner

*Nick Gardner is the library director at Potomac State College in Keyser, WV. When he is not teaching information literacy skills to students or busy with innumerable other duties, he collaborates on research with colleagues including some employed by the US Forest Service and the National Park Service. Mr. Gardner's works can be found here:*

<https://www.researchgate.net/profile/Nicholas-Gardner-3>

*Please tell us about the Cumberland Bone Cave*



Nick Gardner views Cumberland Bone Cave Collection from Special Collections



Exterior of Cumberland Bone Cave

The Cumberland Bone Cave (or CBC) is an important site near Corriganville, Maryland which preserves a rich association of various species representing an almost complete Ice Age ecosystem. The site includes interesting fossil mammal species such as peccaries, bears, porcupines, and even a unique type of wolf, *Canis armbrusteri*, which is named after local businessman, Raymond Armbruster. You can visit the site if you bike or walk the Great Allegheny Passage out of downtown Cumberland. Most people don't even realize they're standing where the cave once was located when they're looking at the marker on the trail. The Western Maryland Railway dynamited through the rock ridge that the cave was enclosed in, and the gate on the trail which many passersby assume is the entry to the cave is actually just a tiny corner of the cave blocked off to prevent further damage to the site or undermining of the limestone escarpment. In actuality, most of the fossil material was collected where the GAP path and the rail tracks are today, or high on the rock wall opposite the marker. Concerted effort by local fossil hunter Trent Spielman on behalf of the Smithsonian and other institutions over a 25-year period has probably completely depleted the site of any remaining Ice Age fossil material. The site is best enjoyed for its rich history and beautiful weathering speleotherms (exposed stalactites). If visitors do find Ice Age fossils, they should report them to Vincent Santucci, the senior paleontologist with the National Park Service.

*What brought you to the FSU Special Collections to research the Cumberland Bone Cave?*

While much of the collected material is spread throughout museums in the eastern United States, we also have a very nice collection of CBC fossils at the Allegheny Museum right here in Cumberland. A complete review of the history of the site and all of the fossil material held in museums is in preparation by noted historian Ralph Eshelman and a team of paleontological professionals across the entire US. My goals with the CBC are much less ambitious -- I was working with researchers with the National Park Service on an interpretative report to aid NPS employees when discussing the site with the public. Part of my role as a librarian was to communicate with archivists and librarians about documents, photographs, etc. in their collection. Archives and libraries often have a mix of unpublished materials or popularly published materials that are harder to find versus scholarly sources.

## Interview with a Researcher: Nick Gardner cont.

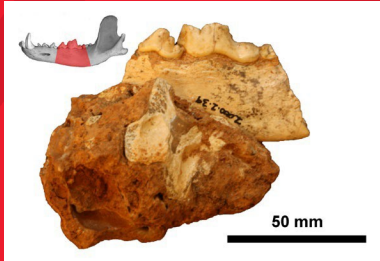
It is often easy for a librarian or knowledgeable researcher to readily build a complete picture of the scholarly work published on a topic, but not so easy to build a bibliography of the non-scholarly works which often have lots of insights into the history and circumstances around an event which will not make it into the dry descriptions of fossils, geology, etc.

The work of librarians at the Lewis J. Ort Library to keep a nice file already on-hand of CBC related materials was a tremendous time saver -- *Liza was exceptionally helpful!!!* I also received information from the vertical files of the library at the Allegany College of Maryland courtesy of Barbara Browning, the small documents collection held by the Allegany Museum courtesy of curator Gary Phillips, and Mr. Eshelman had shared much of the information he'd copied from the Western Maryland Regional Library in Hagerstown. Being able to pull all these collections together plus my own file of "gray literature"\* helped create a more complete picture of the history of the site and the people who worked on it. Having everything in hand was useful, and I've since shared those copies with the other aforementioned information professionals, which enriches all of our collections.

*Why is the Bone Cave Collection valuable to researchers?*

The Cumberland Bone Cave Collection was the most complete assortment of scholarly works, gray literature, photographs, I had seen in a single collection. The prior Special Collections Librarian, MaryJo Price, had prepared her own bibliography of the site which I was able to contrast with my own to see if I had missed any works. It is always a gamble when archivists and librarians go the extra mile on these collections and prepare bibliographies, contextualizing notes, etc. for the 'just-in-case' versus simply preserving as-is what materials they collect or are donated. As a researcher, the notes made by a librarian or archivist are eye-opening as they approach topics from a fresh or different perspective, often trying to find connections with the rest of the collection. In our rush to digitally preserve and intake materials, sometimes these enriching activities are pushed to the wayside. Anyone can scan documents and photos, but a good archivist or librarian knows how the pieces of their collection connect together and is a boon to researchers.

*\*Note- "Gray Literature"* consists of research materials that are traditionally outside the realm of commercial or academic publishing. Common sources of gray literature may include: reports, program brochures, working papers and governmental or agency documents. Gray literature is often found within archival collections.



*Canis armbrusteri* specimen  
retrieved from Cumberland Bone  
Cave



LaSalle High School Students  
exploring Bone Cave, 1950s

## New Collections

This year, we received the following collections:

- Michael Ehrmann donation of 554 postcards of Western Maryland
  - Primarily from the 1980s-present, these postcards represent scenic views of Western Maryland
- Albert and Angela Feldstein Newspaper Album Collection
  - Transferred from Allegany Museum. These albums represent the years Al Feldstein was involved with the Maryland Department of Planning. Albums represent various development projects in Western Maryland including: Rocky Gap Golf Course, Conference Center, and Country and Blue Grass Festival, Western Maryland Scenic Railroad and the Great Allegheny Passage.
- Thomas C. Smith book: *Resource Documents 1898 Founding of State Normal School No. 2 at Frostburg, Maryland*
- Sandra Roeder donation: B. Lucile Wilcox Roeder Collection
  - Lucile Roeder was a trailblazing woman in Western Maryland politics. She was the first woman to serve on Cumberland City Council and first woman Allegany County Commissioner. Her collection is open for research in the Beall Archives.
- Gary Peterson donation: The Henry Miller/Roger Jackson Collection
  - Henry Miller was a prominent author in the 1930s-1960s who wrote classics such as *Tropic of Cancer* and *Tropic of Capricorn*. Gary Peterson, FSC class of 1963 alumnus, donated his extensive collection of Henry Miller materials to the Special Collections. Included are books, manuscript papers, and an extensive collection of pamphlets.
- Ellen Meyers additions to George A. Meyers Collection
  - Ellen Meyers is the niece of George Meyers and a frequent contributor to the George A. Meyers Collection. Ms. Meyers' most recent contributions include information on her father, Michael Meyers, correspondence and various mining memorabilia.
- Stuart Wells Bonning and Maryann Longhenry Bonning additions to Hudson and Ruth Wells Collection: clippings, personal reminiscences, FBI files and correspondence
  - Stuart Wells Bonning is the nephew of Ruth and Hudson Wells, who were Communists. The Ruth and Hudson Wells Collection resides within the George A. Meyers Collection.
- Carrol Giocondo donations to Mike Giocondo Collection
  - Mike Giocondo was a member of the Camden 28, a group of Catholic leftist anti-Vietnam War activists. Mr. Giocondo later became a communist and travelled to the Soviet Union. Mrs. Giocondo's donation includes documents from one of his trips to Russia in the 1970s.
- Ann Matteson donation: The Maurice and August Matteson Collection
  - Maurice and Augusta Matteson were music faculty at FSTC. Their papers include photographs, music programs, clippings and other ephemera.





**CONTACTS**

Liza Zakharova  
Special Collections  
Librarian/Archivist  
[lyzakharova@frostburg.edu](mailto:lyzakharova@frostburg.edu)  
301.687.4889

Dr. Mary Anne Lutz  
Library Services Specialist, J. Glenn  
Beall Archives  
[mlutz@frostburg.edu](mailto:mlutz@frostburg.edu)

Dr. Lea Messman-Mandicott  
Library Director  
[lmessman@frostburg.edu](mailto:lmessman@frostburg.edu)  
301.687.4396

DEPARTMENT OF SPECIAL  
COLLECTIONS AND ARCHIVES  
FROSTBURG STATE  
UNIVERSITY 1 SUSAN EISEL DR  
FROSTBURG, MD 21532-2303

301.687.4889 PHONE  
301.687.7069 FAX  
<https://libguides.frostburg.edu/archives>  
<https://libguides.frostburg.edu/special-collections>

## New Collections cont.

---

- Carolyn Beall donations to George Beall Collection
  - While he was a young State Attorney, George Beall was best known for prosecuting Vice President Spiro T. Agnew (1969-1973). The latest additions to the George Beall papers include correspondence from when he was a child at boarding school, photographs, and several books.
- Carmen B. Jackson and Bill Curtis donations to Pansye S. Atkinson collection
  - Mrs. Jackson and Mr. Curtis donated several boxes of research materials and VHS tapes related to Mrs. Atkinson's years at FSU. The collection and finding aid is currently being updated to reflect these new additions.
- Tony Meyers additions to George A. Meyers Collection
  - Tony Meyers is the nephew of George Meyers. Mr. Meyers' donation includes correspondence sent between his father, Michael Meyers, and George Meyers, articles and photographs.
- Mark E. Carder
  - Mr. Carder generously digitized the 3 William P. Price 8mm film reels of Western Maryland Railroad from circa 1950. These reels offer full-color scenes of trains on the Western Maryland Railroad. They will be on display at the railroad museum in downtown Cumberland.



## Upcoming Exhibits

Frostburg State University is celebrating its 125-year anniversary with a series of quarterly exhibits depicting its epochs: State Normal School No. 2 at Frostburg 1898-1934, Frostburg State Teachers College 1934-1963, Frostburg State College 1963-1987, and Frostburg State University 1987-present. The exhibits will be on display next to the Main Services Desk in the Library.