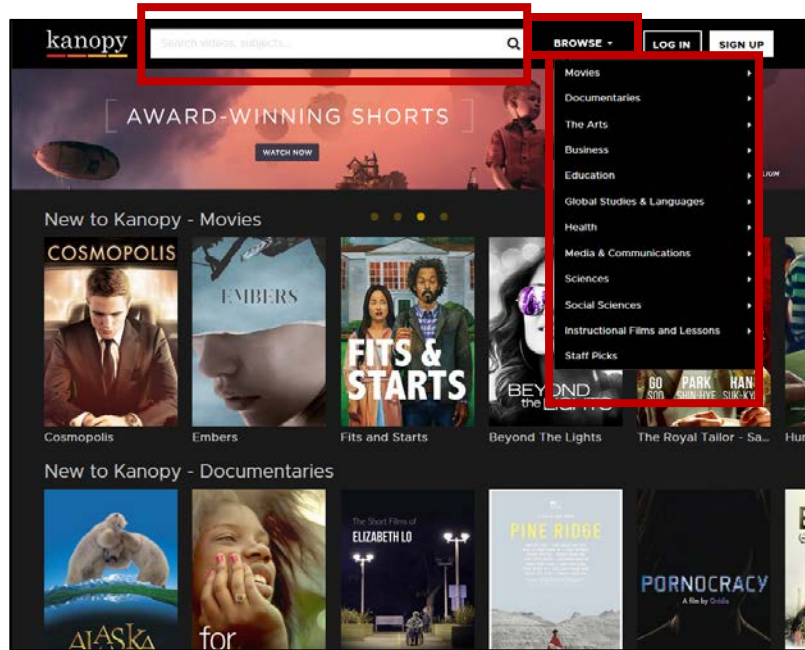


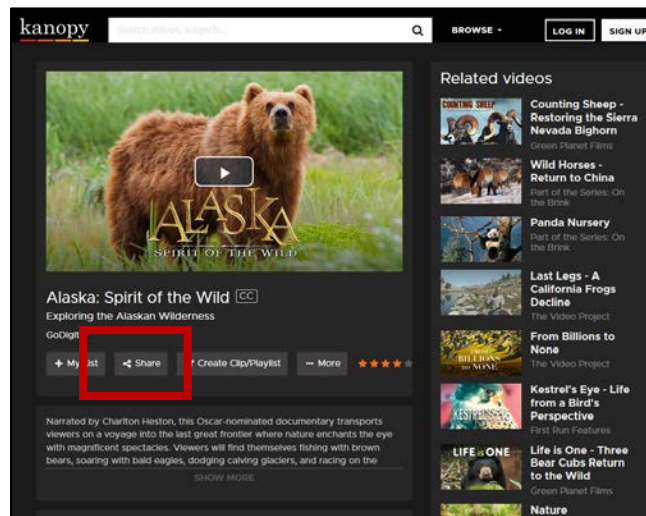
How to Embed or Link to a *Kanopy* Streaming Video in Canvas

Embedding a Video

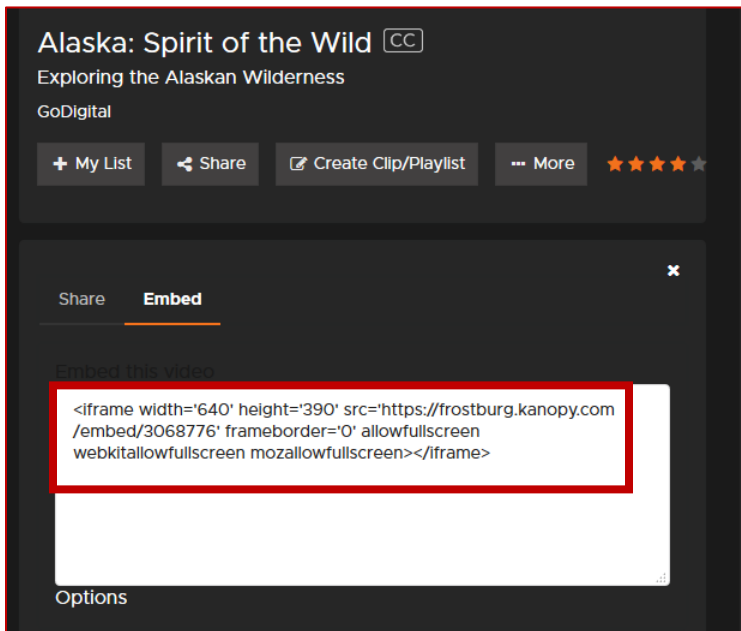
- Access the Kanopy Database from the Library's A-Z Databases webpage (<http://libguides.frostburg.edu/az.php>)
- Search or Browse *Kanopy* to find videos to add to Canvas.



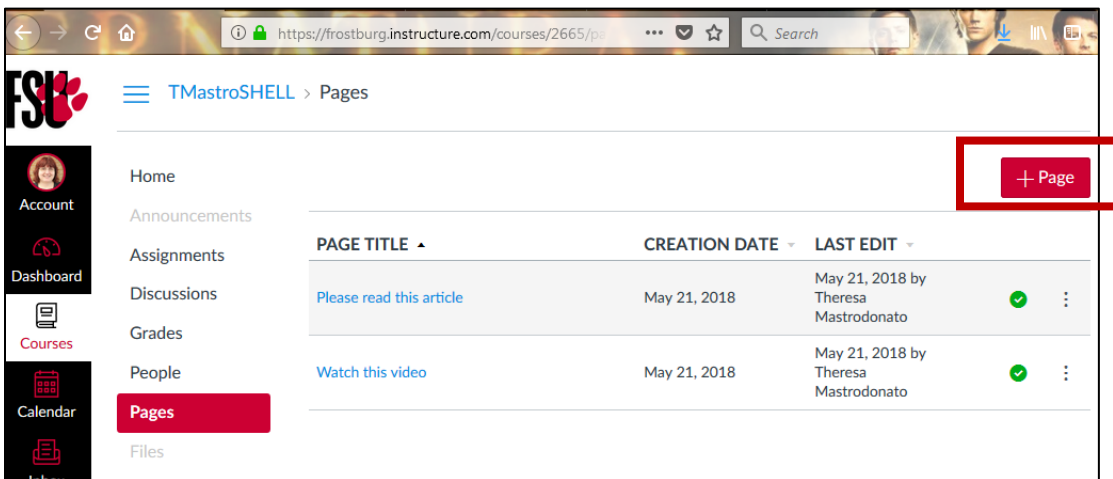
- Once you have found the video that you would like to link to within Canvas, click on its title to access the video webpage.



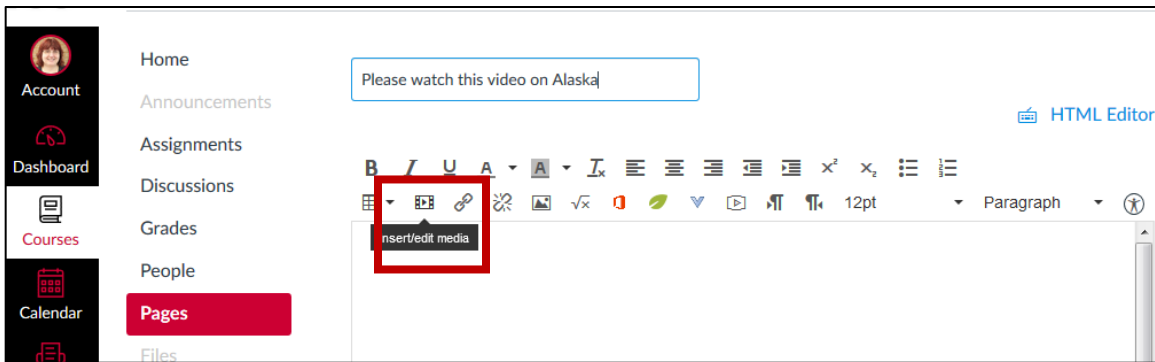
- Once you have accessed the video webpage, click the **Share** button under the video title.
- Then select the Embed link. Highlight and copy the information from the embed box.



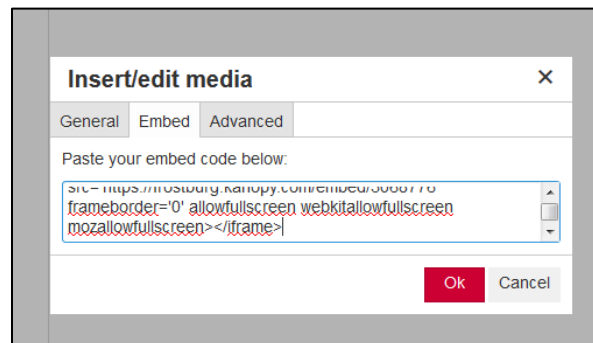
- Now you can go to Canvas and embed this video.
- Once in Canvas, select Pages and select +Page.



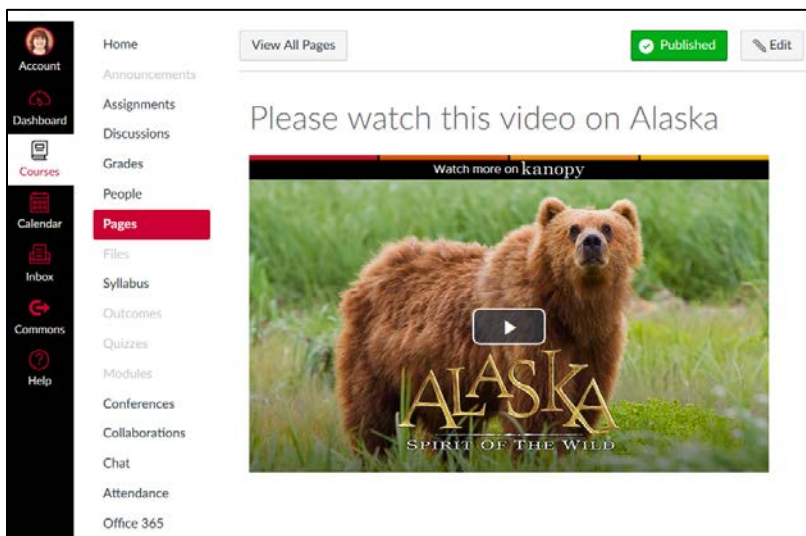
- This will bring you to a new page where you can embed the video.
- Type the name of your page.
- Select the Insert/Edit Media Link.



- Click on the Embed Tab. Paste the embed code you had copied from Kanopy into the box and click **OK**.



- You should now see the video embedded into the page you created.
- You can now select Save and Publish or Save (if you have additional information you want to include).
- The video is now ready for students to watch.

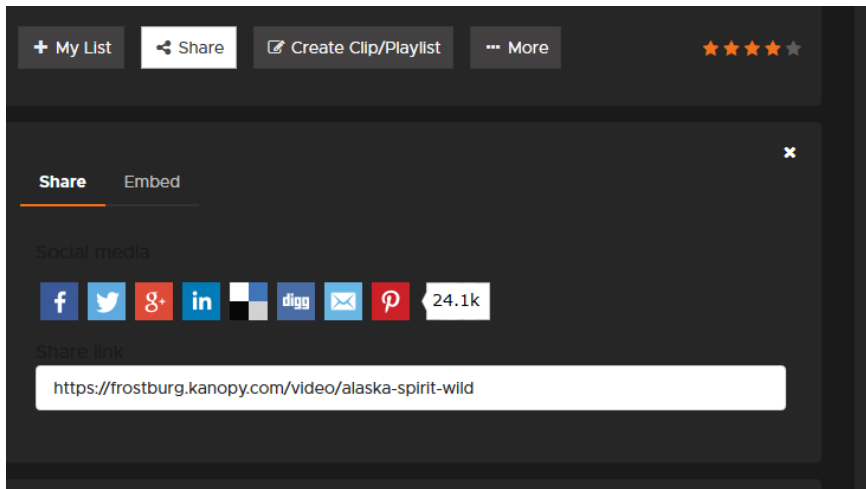


- Students will be able to watch the video from right within Canvas.
- Off-campus users will be prompted to Connect Now.
- A separate window will open up and will ask students/faculty to enter their 14-digit barcode and last name.
- Once this is entered, students/faculty will be able to watch the video from within Canvas.

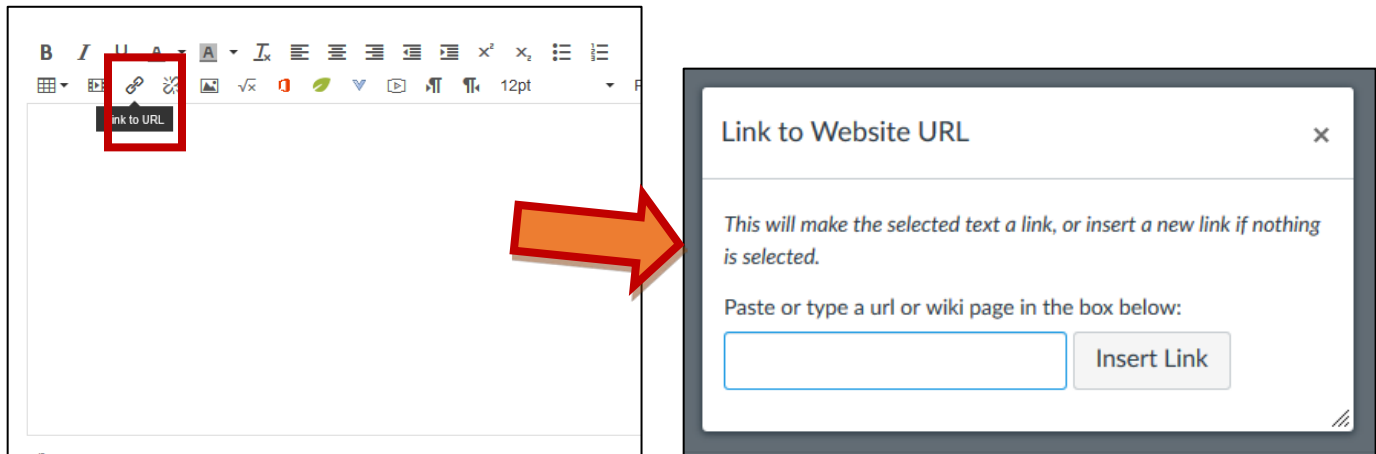
Linking to Video

If you prefer to link to the video instead of embedding it into Canvas, you can do that as well.

- In Kanopy, select the Share icon and copy the URL of the video.



- Once in Canvas, go to the Page that you want to link the video.
- Select the Link to URL icon.



- Paste the URL of the video from Kanopy into the URL box and select Insert Link.
- Once done, select Save or Save & Publish and the video will be available for students to access.
- If the students are off-campus, they will be required to enter their 14-digit barcode and last name in order to access the article.

For additional assistance, please contact a Reference Librarian at libref@frostburg.edu or 301-687-4424.